



• SINCE 1997 •



Zhejiang NOWVOW Mechanical & Electrical Corp.,Ltd



1689 Xianyuan Road, Jinhua, Zhejiang, China
Tel: 0086-579-82262697 Fax: 0086-579-82262706
E-mail: info@nowvow.net
www.nowwinch.net

© NOVAWINCH™ is registered trademark of NOWVOW Mechanical & Electrical Corp., Ltd.
Specifications subjects to change at anytime.

DISTRIBUTED BY:

HYDRAULIC PRODUCT GUIDE

2019-2020

— EXPERIENCE AMAZING



ENTERPRISE PROFILE

Zhejiang Nowvow Mechanical & Electrical Corp Ltd is dedicated to design and manufacture of winching products since 1997. In the past 22 years we have built up an unrivalled reputation and commitment to producing quality and innovative products in the ever increasing worldwide markets.

Innovative technology, customer commitment and listening to our dealers and customers have allowed us to set up the recognised Novawinch brand. Which has now distributors in over 30 countries, and increasing consistently through the dedication of our distributors promoting the unrivalled Novawinch brand.

There is no shortcut to perfection, at Nowvow, we pour our effort and our thirst for challenge into every product we make. To satisfy the tough demands of the world's top grade vehicle and military suppliers, they believe in us, for the peerless reliability of our products.



COMPANY CAPABILITY



Since 1997



First Chinese Off-road electric winch



Top level winch testing lab in China



200,000+ winch annual production



Authorized Chinese military partner



Leading manufacturer of hydraulic and electric, worm gear and planetary gear winches in China



70 registered patents,
5 international &
10 domestic innovation patents



16 full-time engineers



Industry-leading workshop



SERIOUS AND SAFE FOR EVERY TOUGH WORK

Whatever tough application, you can always depend on **NOVAWINCH** your reliable partner to help you. Our undefeatable range of hydraulic winches from 8000lbs through to 55000lbs, will allow you to choose the correct winch for your application, whatever the range, from premium to standard range. To move on we are eager to exhibit the new range of products and winches, so check out the relevant winch details and models, for more information please go to www.novawinch.net.



Towing and Recovery



Crane and Lifting



Forestry



Mining and Construction



Fire and Rescue



Military



Specialty vehicle



Oil and Gas



Marine



Railroad

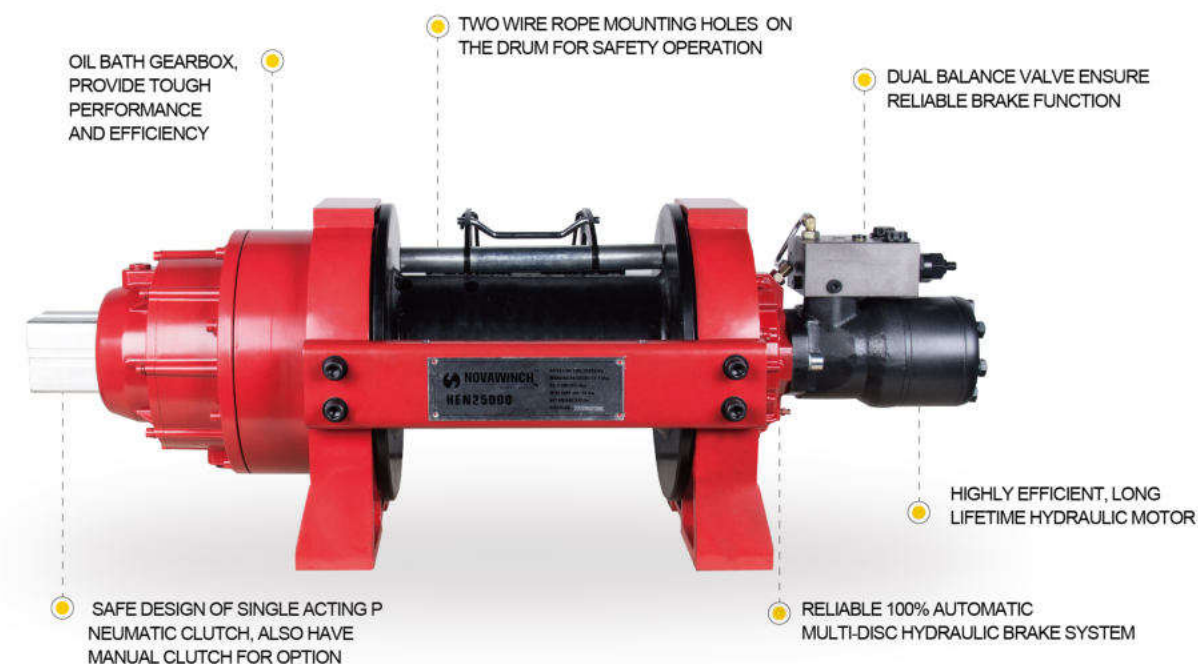
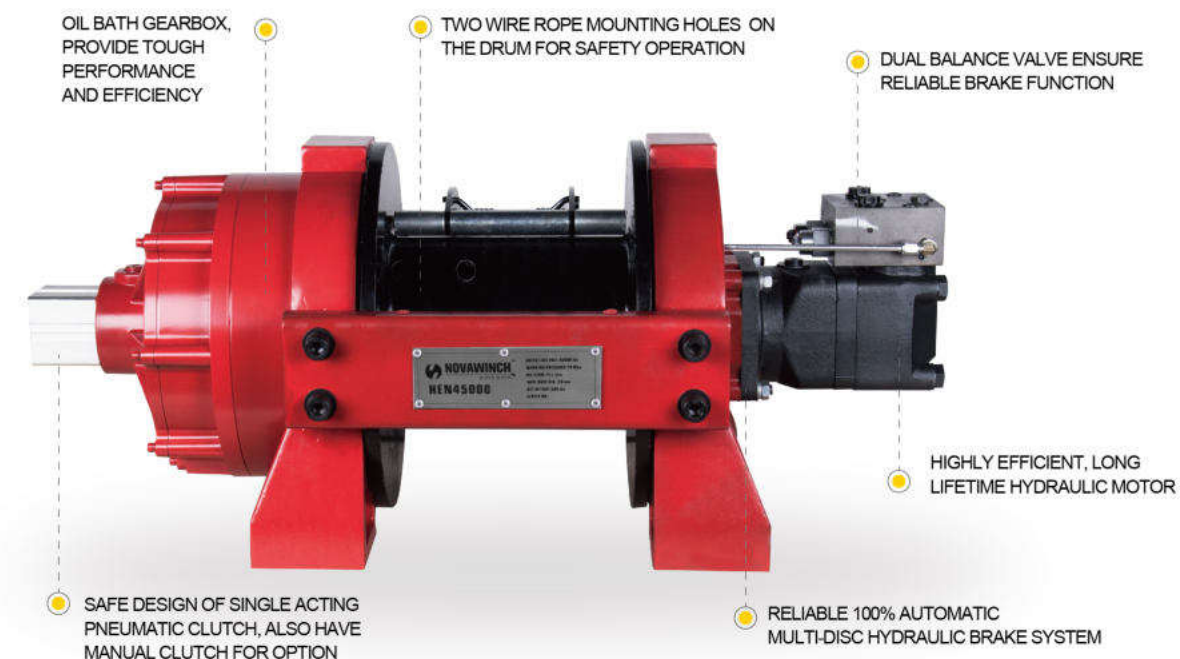
THE PERFECT COMPANION FOR RELIABILITY AND DEPENDABILITY

When you equipped with **NOVAWINCH** hydraulic winch, you can be sure that you are using the best! The HEN range are designed to satisfy the most demanding of toughest commercial/industrial application. Such as recovery & rescue applications, heavy duty flat bed, trailer, crane applications etc. Available from 8000lb through to 45000lb, complete series meet EN14492-1:2006 and SAE J706 requirement.



HEN SERIES HYDRAULIC WINCH 45000-20000lbs

The powerful, robust HEN series hydraulic winches of the NOVAWINCH lineup, their high performance already verified by worldwide market. As star product of NOVAWINCH hydraulic winch, HEN series winch perform every task excellently.



Features:

- 1.Excellent weight to strength ratio.
- 2.Extreme-duty winch sealing, enable superior water resistance.
- 3.Wire rope, Wire rope tensioner, hook, roller fairlead, etc various accessories for option, meet different applications.
- 4.Single acting pneumatic clutch, dependable and reliable design that meet EN standard, also have manual clutch for option.
- 5.75% rated line pull durability test was conducted over 500 cycles, without any gear or motor damage.

MEET EN14492-1:2006 REQUIREMENTS:

X1.25

1.25 TIMES



Winch mechanical structure reach 1.25 times of winch rated line pull

X1.5

1.5 TIMES



Space between drum and tie bar should be 1.5 times of the wire rope diameter

X2

TWO TIMES



The first layer of wire rope safety factor(breaking strength/ rated pulling) must at least 2 times of winch rated line pull

2

TWO MOUNTING HOLES



Two wire rope mounting holes on the drum for safety operation

10

≥10:1



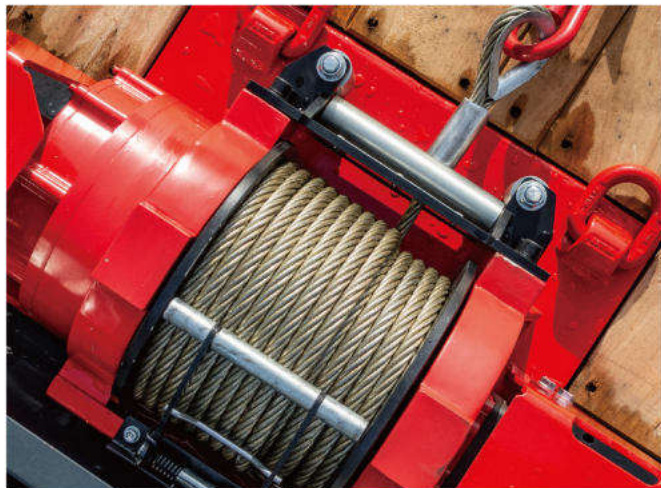
(Drum diameter+rope diameter)/ rope diameter≥10:1



Pneumatic clutch



Manual clutch

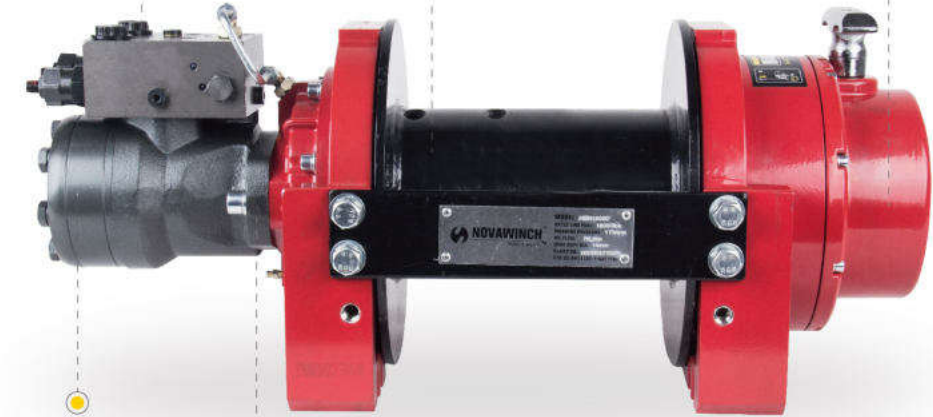


HEN SERIES HYDRAULIC WINCH 18000-8000lbs

DUAL BALANCE VALVE
ENSURE RELIABLE
BRAKE FUNCTION

TWO WIRE ROPE MOUNTING HOLES ON
THE DRUM FOR SAFETY OPERATION

2 STAGE HIGH STRENGTH HARDENED
STEEL PLANETARY GEAR, PROVIDE
TOUGH PERFORMANCE AND
EFFICIENCY



HIGHLY EFFICIENT, LONG LIFETIME
HYDRAULIC MOTOR CAN BE ROTATED
TO MEET DIFFERENT OIL PIPE LENGTH

RELIABLE 100% AUTOMATIC MULTI-DISC
HYDRAULIC BRAKE SYSTEM

Features:

- 1.Excellent weight to strength ratio.
- 2.Extreme-duty winch sealing, enable superior water resistance.
- 3.Wire rope, wire rope tensioner, hook, roller fairlead, mounting plate etc various accessories for option, meet different applications.
- 4.Manual clutch is standard, pneumatic clutch for option.
- 5.SAE J706 PART6.2.2 duty cycle test,HEN18000 winch reach 240m.
- 6.75% rated line pull durability test was conducted over 500 cycles, without any gear or motor damage.

OPTIONAL ACCESSORIES



WIRE ROPE TENSIONER



WIRE ROPE ASSEMBLY



HEAVY DUTY
ROLLER FAIRLEAD



PNEUMATIC CLUTCH
(6MM AIR TUBE CONNECTING HOLE)



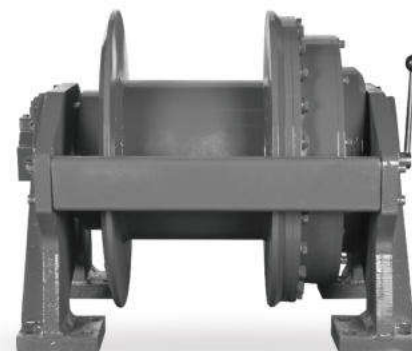
HW SERIES HYDRAULIC WINCH

The powerful, robust HW series hydraulic winches of the **NOVAWINCH** lineup, they are rugged, heavy duty, high performance. Full range from 6kN to 25kN, handle the toughest industrial/commercial applications. HW series as well as meet EN14492-1:2006 requirement.

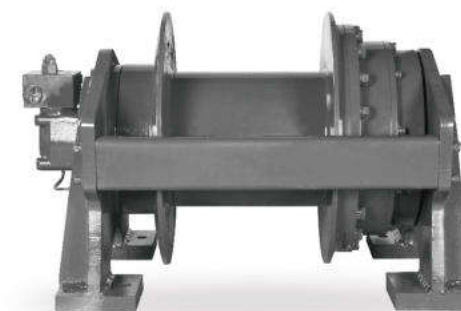


HW SERIES HYDRAULIC WINCH 25kN-6kN

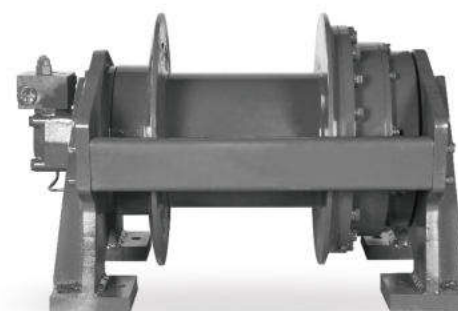
The powerful, robust HW series hydraulic winches of the NOVAWINCH lineup, they are rugged, heavy duty, high performance. Full range from 6kN to 25kN, handle the toughest industrial/commercial applications. HW series as well as meet EN14492-1:2006 requirement.



HW-250/NH



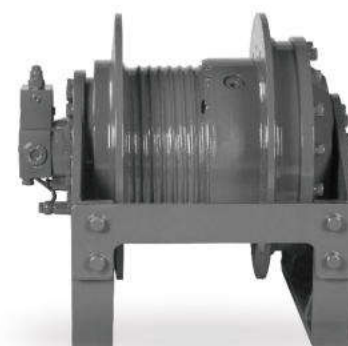
HW-200/NH



HW-150/NH



HW-100/NH



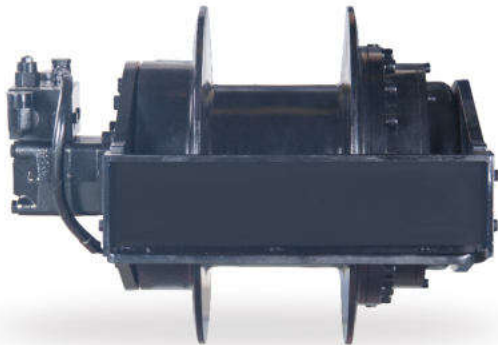
HW-060/NH



WE ALSO HAVE MORE DESIGN PRODUCTS TO MEET DIFFERENT APPLICATION



HW-250H/NH



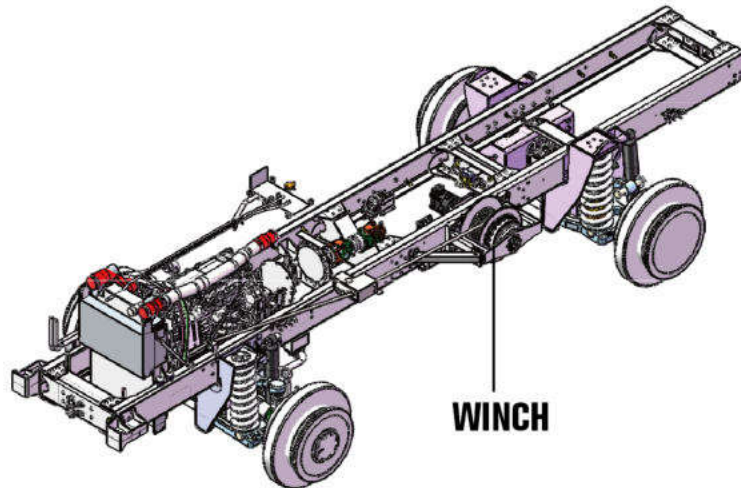
HW-100H/NH



HWDGT-065/NH-A



HW-100C/NH



Features:

- 1.Integrated hydraulic motor and automatic brake assembly half hidden inside winch drum, which provides compact winch size, easy for mounting on vehicles.
 - 2.The wire rope capacity is more than 60m, which can satisfy various demands.
 - 3.Drum diameter to wire rope diameter is above12:1, meet "BSEN 14492-1:2006 Cranes-Power driven winches and hoists". Avoid wire rope break during operation.
 - 4.High torque hydraulic motor, 3-stage planetary gearbox and self-adjusting gear design provide winch solid pulling capacity and high efficiency.
 - 5.6kN model has high performance, fast line speed, compact structure can meet strictly mounting requirement, It is without clutch design.
 - 6.150kN, 200kN and 250kN models have dual speed plus neutral gears design, suit for various working conditions.
 - 7.Clutch automatic alarm function as an optional for 150kN, 200kN and 250kN models, ensure the clutch safety and reliability.
 - 8.Oil bath gearbox, winch work efficiently.
 - 9.Extremely watertight with internal high quality anti-heat rubber seals.
- Overflow valve or globe valve can be provided as customer's demands, for safety operation.

MEET EN14492-1:2006 REQUIREMENTS:

X1.25
1.25 TIMES



Winch mechanical structure reach 1.25 times
of winch rated line pull

X1.5
1.5 TIMES



Space between drum and tie bar should be
1.5 times of the wire rope diameter

X2

TWO TIMES



The first layer of wire rope safety factor(breaking strength/
rated pulling) must at least 2 times of winch rated line pull

2

TWO MOUNTING HOLES



Two wire rope mounting holes on the drum for safety operation

10

≥10:1



(Drum diameter+rope diameter)/ rope diameter≥10:1



NCH30 HOISTING WINCH

NCH30 hoisting winch is your perfect choice for hoisting work, suit for mobile hoisting machinery, construction hoisting machinery, stationary type hoisting system, drilling equipment, provides reliable performance for above work. Accurate operation ability makes it ideal for high efficiency work demand.



Features:

- 1.Radial piston hydraulic motor volumetric efficiency reaches 98%, overall efficiency reaches 90%, better than other similar products on the market.
- 2Automatic brake are hidden inside gearbox, the gearbox are hidden inside of the drum, makes it compact size, suit for most of hoisting system.
- 3.Self-adjusting gear design provides winch solid pulling capacity and high efficiency.
- 4.Differential gear train transmission mechanism design, it has planetary gear's all features but has smaller size.
- 5.Use high quality bearing, stable, low energy consumption and low noise.
- 6.Long working life, low maintenance cost.
- 7.Meets SAEJ706 standard, as well as CE approval.



WE HAVE MORE HYDRAULIC WINCHES FOR DIFFERENT OPTION.
SUPER VALUE BUT HIGH PERFORMANCE.

NSH12000 WORM GEAR HYDRAULIC WINCH



NVH15000-10000 HYDRAULIC WINCH



HW-040/NH HYDRAULIC WINCH



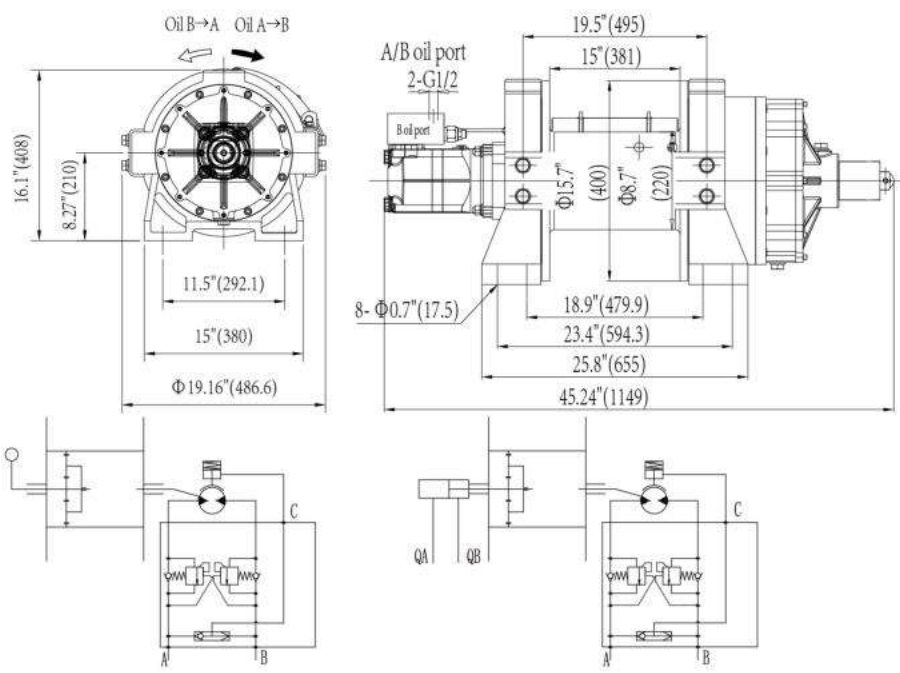
CONTENTS I I I I I



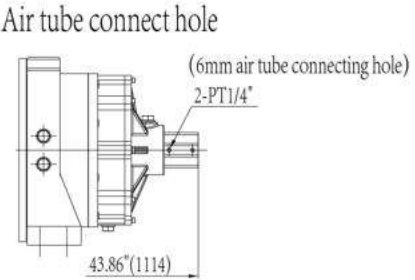
HEN45000L	01
HEN45000 - 40000	02
HEN35000 - 30000	03
HEN25000	04
HEN20000	05
HEN18000	06
HEN15000 - 12000	07
HEN10000S - 8000S	08
HEN10000 - 8000	09
HW-250/NH	10
HW-200/NH	11
HW-150/NH	12
HW-100/NH	13
HW-060/NH	14
HW-100H/NH	15
HW-100C/NH	16
NCH30	17
NSH12000	18
NVH15000	19
NVH10000	20
HW-040/NH	21



HEN45000L



PNEUMATIC CLUTCH	
Air pressure range (bar)	1~8
Ventilation volume (L/min)	1



SPECIFICATION								
Model	First layer line pull		First layer line speed		Working pressure diff.		Oil flow supply	Gear ratio
	lbs	kg	fpm	mpm	psi	MPa	l/min	
HEN45000L	45000	20412	12.5	3.8	2030	14	75	30.4:1

Model	Wire rope dia.		Layer	Wire rope capacity	
	inch	mm		ft	m
HEN45000L	Φ7/8"	Φ22	4	190.3'	58

PERFORMANCE						
Model	Rated line pull per layer		HEN45000L Line speed		Wire rope capacity per layer	
	lbs	kg	fpm	mpm	ft	m
1	45000	20412	12.5	3.8	37'	11.3
2	38571	17496	14.8	4.5	82'	25
3	33750	15309	17.1	5.2	134'	41
4	30000	13608	19.4	5.9	190.3'	58

VALVE OPTIONS	
Model	HEN45000L
Valve	NF-120 P2 Y2 S1-003

- WARNING:**

 - The winch will never be used for hoisting people or hoisting objects above people.
 - Do not use clutch under load.
 - Do not equip winch into oil supply system which without relief valve.
- NOTE:**

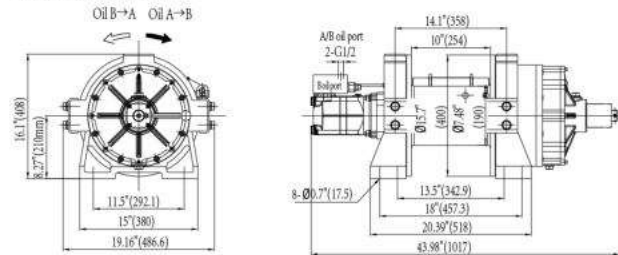
 - Recommended oil flow supply range is 40-90 l/min.
 - Dual balance valves as standard, winch must be used in Independent oil supply system which with relief valve.

HEN45000 - 40000

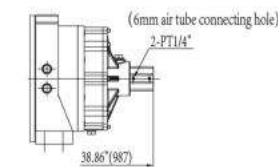
PNEUMATIC CLUTCH

Air pressure range (bar)	1~8
Ventilation volume (L/min)	1

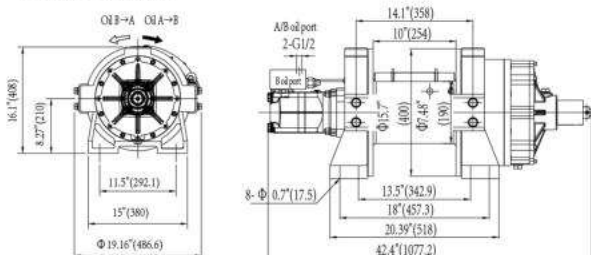
HEN40000



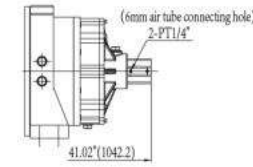
Air tube connect hole



HEN45000



Air tube connect hole



SPECIFICATION

Model	First layer line pull		First layer line speed		Working pressure diff.		Oil flow supply	Gear ratio
	lbs	kg	fpm	mpm	psi	MPa		
HEN45000	45000	20412	12.5	3.8	2030	14	75	30.4:1
HEN40000	40000	18144	13.8	4.2	2030	14	75	30.4:1

Model	Wire rope dia.		Layer	Wire rope capacity	
	inch	mm		ft	m
HEN45000	Φ7/8"	Φ22	4	111.5'	34
HEN40000	Φ4/5"	Φ20	5	147.6'	45

PERFORMANCE

Model	HEN45000					
	Rated line pull per layer		Line speed		Wire rope capacity per layer	
Layer of cable	lbs	kg	fpm	mpm	ft	m
1	45000	20412	12.5	3.8	25.23'	7.6
2	37266	16903	14.8	4.5	53.05'	16.2
3	31800	14424	17.1	5.2	82.57'	25.2
4	27733	12579	19.4	5.9	111.5'	34
Model	HEN40000					
	Rated line pull per layer		Line speed		Wire rope capacity per layer	
Layer of cable	lbs	kg	fpm	mpm	ft	m
1	40000	18144	13.8	4.2	25.9'	7.9
2	33600	15241	16.1	4.9	56.7'	17.3
3	28966	13139	18.4	5.6	92.5'	28.2
4	25455	11546	20.7	6.3	133.2'	40.6
5	22703	10298	23.3	7.1	147.6'	45

DIMENSIONS AND NET WEIGHT(WITHOUT WIRE ROPE)

Model	Weight	
	lbs	kg
HEN45000	595	270
HEN40000	584	265

WARNING:

- The winch will never be used for hoisting people or hoisting objects above people.
- Do not use clutch under load.
- Do not equip winch into oil supply system which without relief valve.

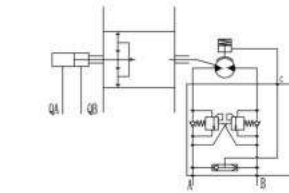
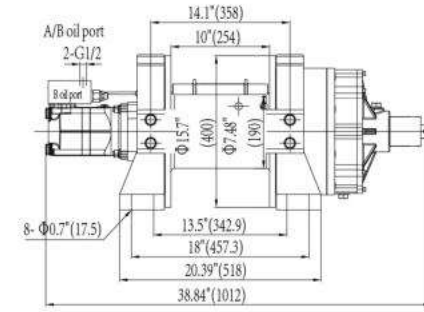
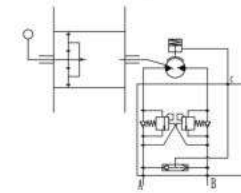
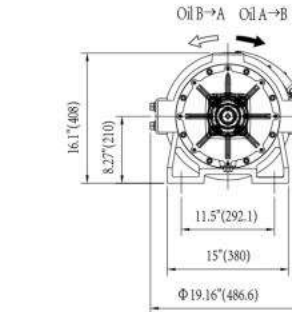
NOTE:

- Recommended oil flow supply range is 40-90 l/min.
- Dual balance valves as standard, winch must be used in Independent oil supply system which with relief valve.

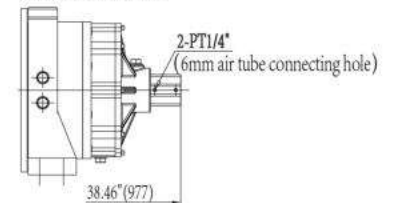
HEN35000 - 30000

PNEUMATIC CLUTCH

Air pressure range (bar)	1~8
Ventilation volume (L/min)	1



Air tube connect hole



SPECIFICATION

Model	First layer line pull		First layer line speed		Working pressure diff.		Oil flow supply	Gear ratio
	lbs	kg	fpm	mpm	psi	MPa		
HEN35000	35000	15876	15.1	4.6	2465	17	70	30.39:1
HEN30000	30000	13608	15.1	4.6	2175	15	70	30.39:1

Model	Wire rope dia.		Layer	Wire rope capacity	
	inch	mm		ft	m
HEN35000	Φ3/4"	Φ18	5	170.6'	52
HEN30000	Φ3/4"	Φ18	5	170.6'	52

PERFORMANCE

Model	HEN35000					
	Rated line pull per layer		Line speed		Wire rope capacity per layer	
Layer of cable	lbs	kg	fpm	mpm	ft	m
1	35000	15876	15.1	4.6	22.9'	7
2	29836	13533	17.4	5.3	52.5'	16
3	26000	11793	20.0	6.1	91.8'	28
4	23038	10450	22.6	6.9	134.5'	41
5	20682	9381	25.3	7.7	170.6'	52
Model	HEN30000					
	Rated line pull per layer		Line speed		Wire rope capacity per layer	
Layer of cable	lbs	kg	fpm	mpm	ft	m
1	30000	13608	15.1	4.6	22.9'	7
2	25578	11600	17.4	5.3	52.5'	16
3	22288	10108	19.7	6.0	91.8'	28
4	19750	8957	22.0	6.7	134.5'	41
5	17728	8040	24.3	7.4	170.6'	52

NET WEIGHT(WITHOUT WIRE ROPE)

Model	Weight	
	lbs	kg
HEN35000	573	260
HEN30000	573	260

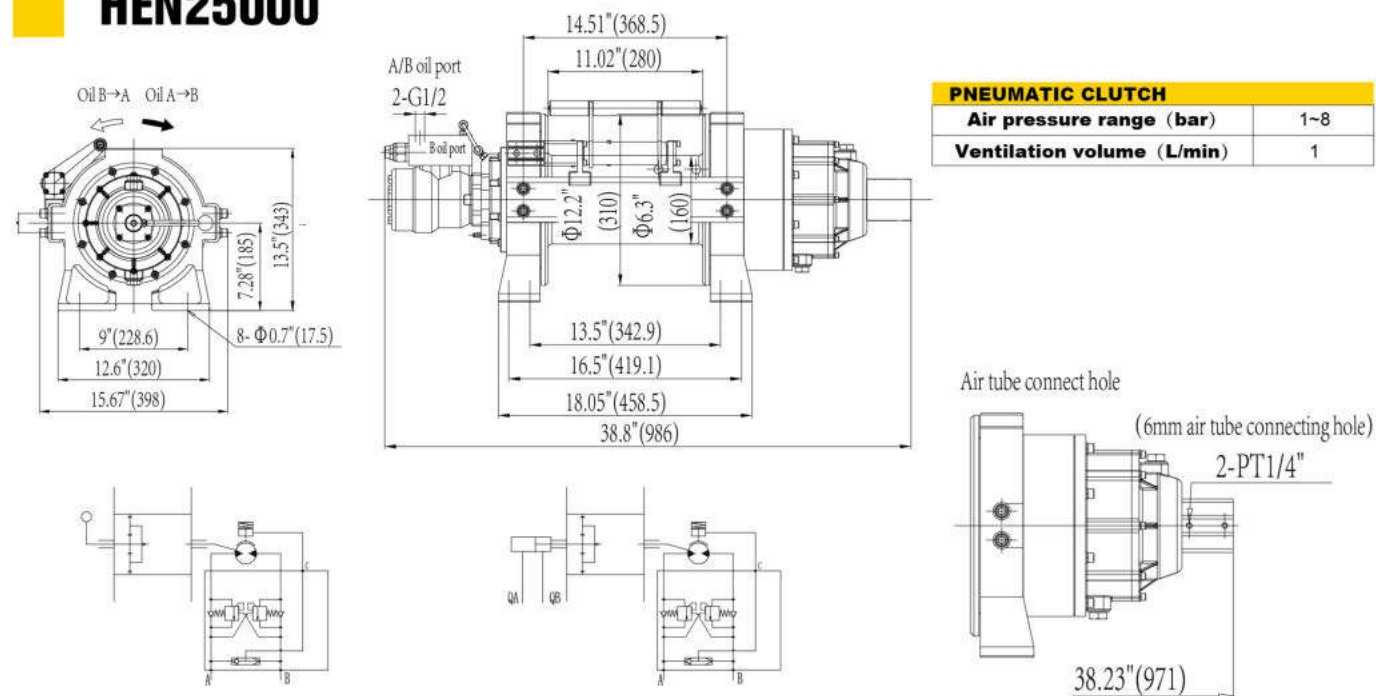
WARNING:

- The winch will never be used for hoisting people or hoisting objects above people.
- Do not use clutch under load.
- Do not equip winch into oil supply system which without relief valve.

NOTE:

- Recommended oil flow supply range is 35-90 l/min.
- Dual balance valves as standard, winch must be used in Independent oil supply system which with relief valve.

HEN25000



SPECIFICATION

Model	First layer line pull		First layer line speed		Working pressure diff.		Oil flow supply	Gear ratio
	lbs	kg	fpm	mpm	psi	MPa		
HEN25000	25000	11340	18	5.5	2175	15	90	20:1

Model	Wire rope dia.		Layer	Wire rope capacity	
	inch	mm		ft	m
HEN25000	Φ5/8"	Φ16	4	131'	40

PERFORMANCE

Model	HEN25000					
	Rated line pull per layer		Line speed		Wire rope capacity per layer	
Layer of cable	lbs	kg	fpm	mpm	ft	m
1	25000	11340	18	5.5	28.9'	8.8
2	21153	9595	21.3	6.5	63.3'	19.3
3	18333	8316	24.6	7.5	102.7'	31.3
4	16176	7337	27.8	8.5	131'	40

DIMENSIONS AND NET WEIGHT(WITHOUT WIRE ROPE)

Model	Weight	
	lbs	kg
HEN25000	358	162.5

VALVE OPTIONS

Model	HEN25000
Valve	NF-120 P2 Y2 S1-003

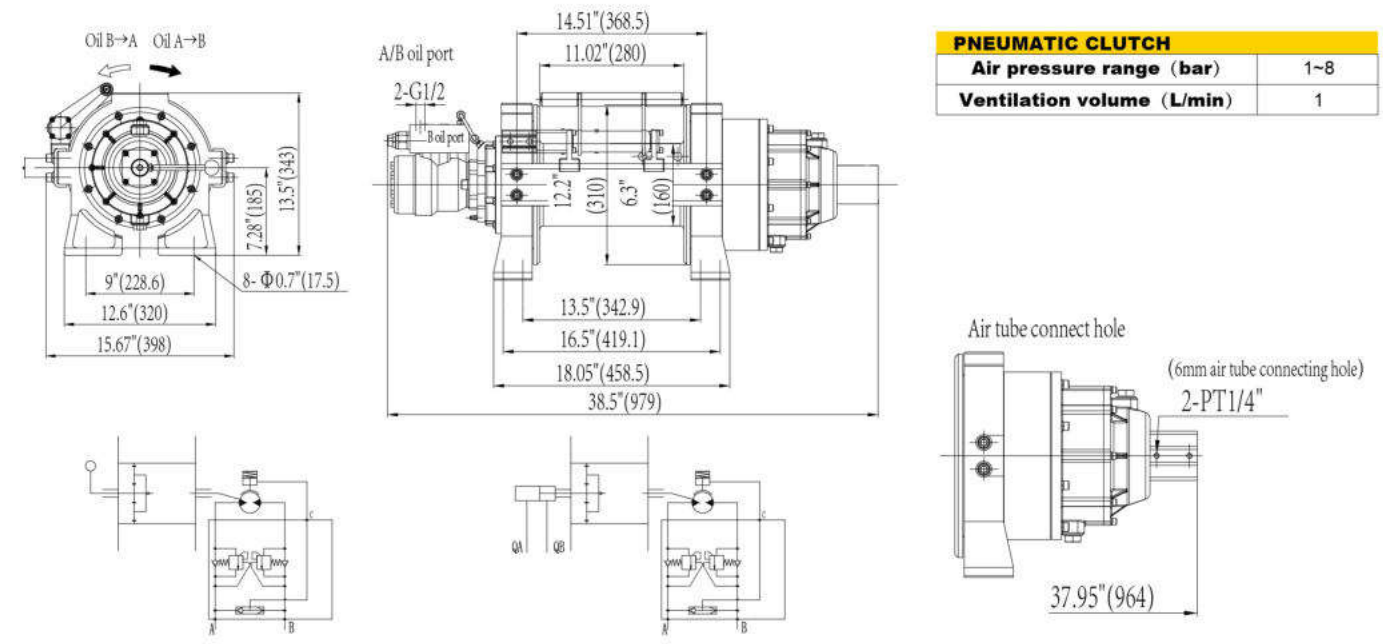
WARNING:

- The winch will never be used for hoisting people or hoisting objects above people.
- Do not use clutch under load.
- Do not equip winch into oil supply system which without relief valve.

NOTE:

- Recommended oil flow supply range is 35-90 l/min.
- Dual balance valves as standard, winch must be used in Independent oil supply system which with relief valve.

HEN20000



SPECIFICATION

Model	First layer line pull		First layer line speed		Working pressure diff.		Oil flow supply	Gear ratio
	lbs	kg	fpm	mpm	psi	MPa		
HEN20000	20000	9072	20.6	6.3	2175	15	85	20:1

Model	Wire rope dia.		Layer	Wire rope capacity	
	inch	mm		ft	m
HEN20000	Φ35/64"	Φ14	5	203'	62

PERFORMANCE

Model	HEN20000					
	Rated line pull per layer		Line speed		Wire rope capacity per layer	
Layer of cable	lbs	kg	fpm	mpm	ft	m
1	20000	9072	20.6	6.3	34.1'	10.4
2	17228	7814	23.9	7.3	73.5'	22.4
3	15130	6863	27.2	8.3	118.4'	36.1
4	13488	6118	30.5	9.3	169'	51.5
5	12168	5519	33.7	10.3	203'	62

DIMENSIONS AND NET WEIGHT(WITHOUT WIRE ROPE)

Model	Weight	
	lbs	kg
HEN20000	357	162

VALVE OPTIONS

Model	HEN20000
Valve	NF-120 P2 Y2 S1-003

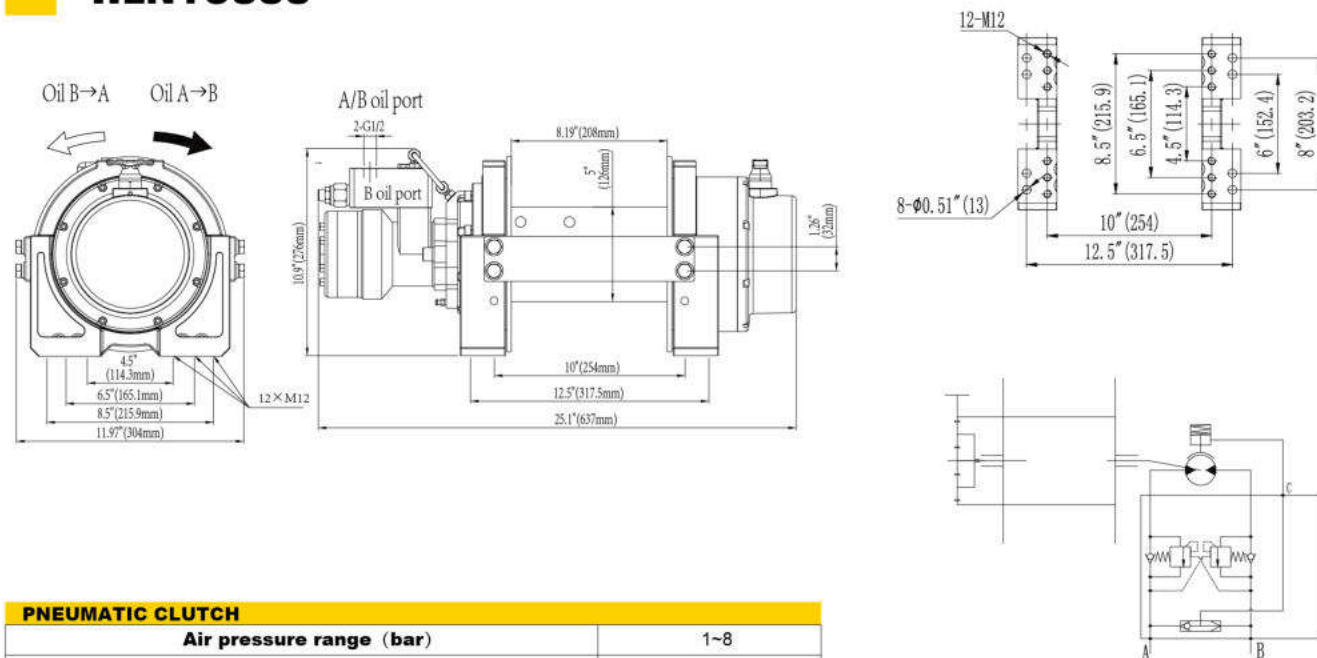
WARNING:

- The winch will never be used for hoisting people or hoisting objects above people.
- Do not use clutch under load.
- Do not equip winch into oil supply system which without relief valve.

NOTE:

- Recommended oil flow supply range is 35-90 l/min.
- Dual balance valves as standard, winch must be used in Independent oil supply system which with relief valve.

HEN18000



PNEUMATIC CLUTCH		
Air pressure range (bar)	1~8	
Ventilation volume (L/min)	1	

SPECIFICATION								
Model	First layer line pull		First layer line speed		Working pressure diff.		Oil flow supply	Gear ratio
	lbs	kg	fpm	mpm	psi	MPa	l/min	
HEN18000	18000	8172	22.9	7	2465	17	75	17.3:1

Model	Wire rope dia.		Layer	Wire rope capacity	
	inch	mm		ft	m
HEN18000	Φ35/64	Φ14	4	98.4'	30

PERFORMANCE						
Model	Layer of cable	HEN18000				
		Rated line pull per layer		Line speed		Wire rope capacity per layer
		lbs	kg	fpm	mpm	ft
	1	18000	8172	22.9	7	20'
	2	15000	6804	27.5	8.4	44'
	3	12857	5832	32.1	9.8	71.9'
	4	11250	5103	36.7	11.2	98.4'

NET WEIGHT(WITHOUT WIRE ROPE)		
Model	Weight	
	lbs	kg
HEN18000	167.4	76

VALVE OPTIONS	
Model	HEN18000
Valve	NF-060 P2 Y2 S1-002

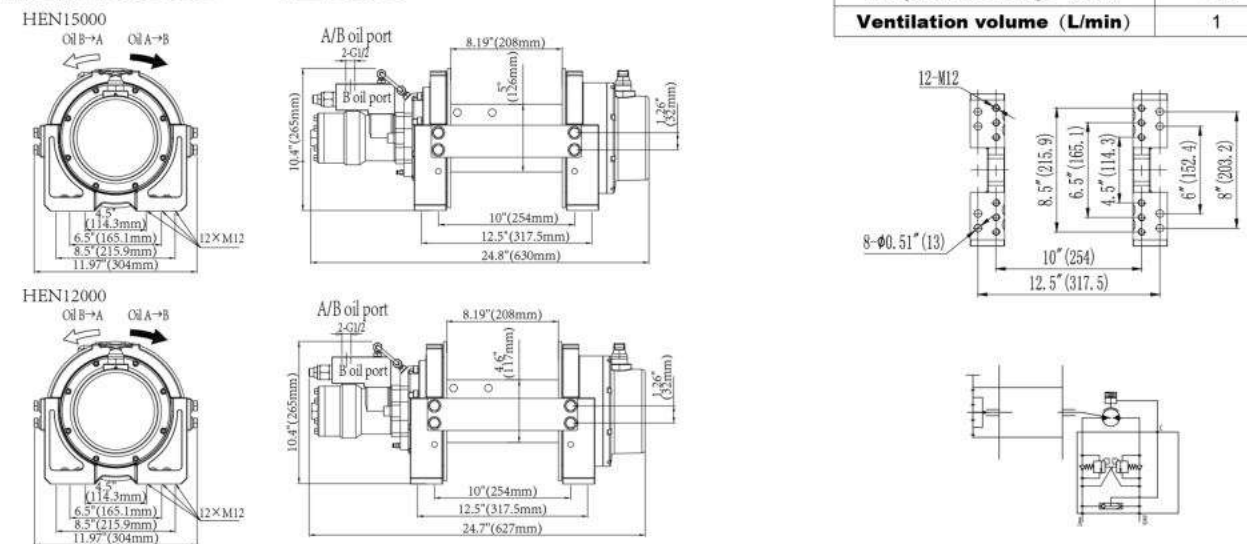
WARNING:

- The winch will never be used for hoisting people or hoisting objects above people.
- Do not use clutch under load.
- Do not equip winch into oil supply system which without relief valve.

NOTE:

- Recommended oil flow supply range is 35-75 l/min.
- Dual balance valves as standard, winch must be used in Independent oil supply system which with relief valve.

HEN15000 - 12000



PNEUMATIC CLUTCH	
Air pressure range (bar)	1~8
Ventilation volume (L/min)	1

SPECIFICATION								
Model	First layer line pull		First layer line speed		Working pressure diff.		Oil flow supply	Gear ratio
	lbs	kg	fpm	mpm	psi	MPa	l/min	
HEN15000	15000	6810	18	5.5	2175	15	60	17.3:1
HEN12000	12000	5448	19.7	6	2030	14	60	17.3:1

Model	Wire rope dia.		Layer	Wire rope capacity	
	inch	mm		ft	m
HEN15000	Φ1/2"	Φ13	4	98.4'	30
HEN12000	Φ15/32"	Φ12	4	98.4'	30

PERFORMANCE						
Model	Layer of cable	HEN15000				
		Rated line pull per layer		Line speed		Wire rope capacity per layer
		lbs	kg	fpm	mpm	ft
	1	15000	6810	18	5.5	21.3'
	2	12636	5732	21.3	6.5	48.6'
	3	10916	4952	24.9	7.6	76.1'
	4	9608	4358	28.2	8.6	98.4'

Model	Layer of cable	HEN12000				
		Rated line pull per layer		Line speed		Wire rope capacity per layer
		lbs	kg	fpm	mpm	ft
	1	12000	5448	19.7	6	21.6'
	2	10118	4589	23.3	7.1	48.9'
	3	8746	3967	26.9	8.2	76.8'
	4	7701	3493	30.5	9.3	98.4'

DIMENSIONS AND NET WEIGHT(WITHOUT WIRE ROPE)		
Model	Weight	
	lbs	kg
HEN15000	161	73
HEN12000	150	68

VALVE OPTIONS	
Model	HEN15000/12000
Valve	NF-120 P2 Y2 S1-001

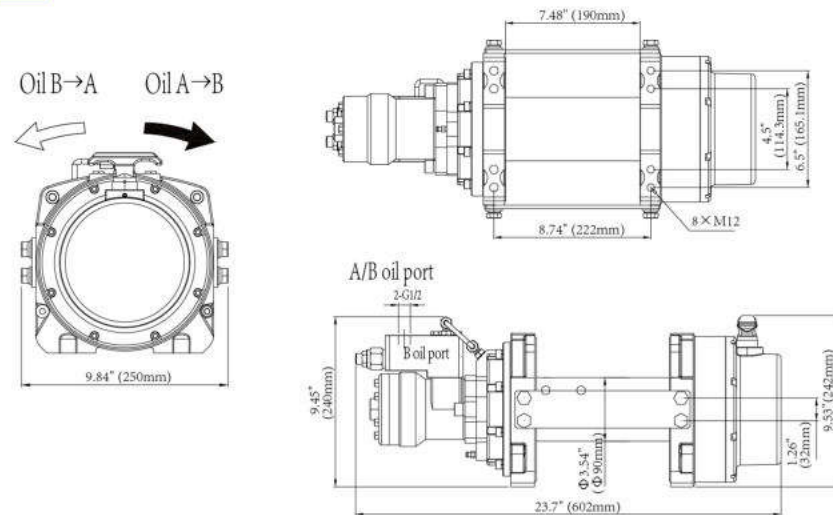
WARNING:

- The winch will never be used for hoisting people or hoisting objects above people.
- Do not use clutch under load.
- Do not equip winch into oil supply system which without relief valve.

NOTE:

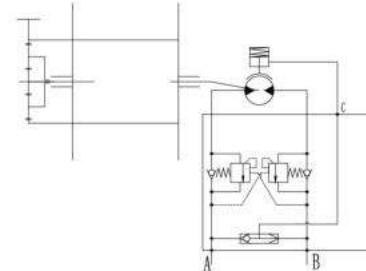
- Recommended oil flow supply range is 35-60 l/min.
- Dual balance valves as standard, winch must be used in Independent oil supply system which with relief valve.

HEN10000S - 8000S



PNEUMATIC CLUTCH

Air pressure range (bar)	1~8
Ventilation volume (L/min)	1



SPECIFICATION

Model	First layer line pull		First layer line speed		Working pressure diff.		Oil flow supply	Gear ratio
	lbs	kg	fpm	mpm	psi	MPa		
HEN10000S	10000	4540	19.7	6	1885	13	60	16.9:1
HEN8000S	8000	3632	27.9	8.5	2030	14	60	16.9:1

Model	Wire rope dia.		Layer	Wire rope capacity	
	inch	mm		ft	m
HEN10000S	Φ13/32"	Φ10.3	4	82'	25
HEN8000S	Φ3/8"	Φ9.2	4	82'	25

PERFORMANCE

Model	Layer of cable	HEN10000S		HEN10000S		HEN10000S	
		Rated line pull per layer		Line speed		Wire rope capacity per layer	
		lbs	kg	fpm	mpm	ft	m
	1	10000	4540	19.7	6	19'	5.8
	2	8296	3763	23.6	7.20	40.8'	12.4
	3	7088	3215	27.6	8.40	64.8'	19.7
	4	6188	2807	31.5	9.60	82'	25

Model	Layer of cable	HEN8000S		HEN8000S		HEN8000S	
		Rated line pull per layer		Line speed		Wire rope capacity per layer	
		lbs	kg	fpm	mpm	ft	m
	1	8000	3632	27.9	8.5	21.1'	6.4
	2	6748	3061	33.1	10.1	44.9'	13.7
	3	5835	2647	38.4	11.7	71'	21.6
	4	5140	2332	43.3	13.2	82'	25

NET WEIGHT(WITHOUT WIRE ROPE)

Model	Weight	
	lbs	kg
HEN10000S	108	49
HEN8000S	106	48

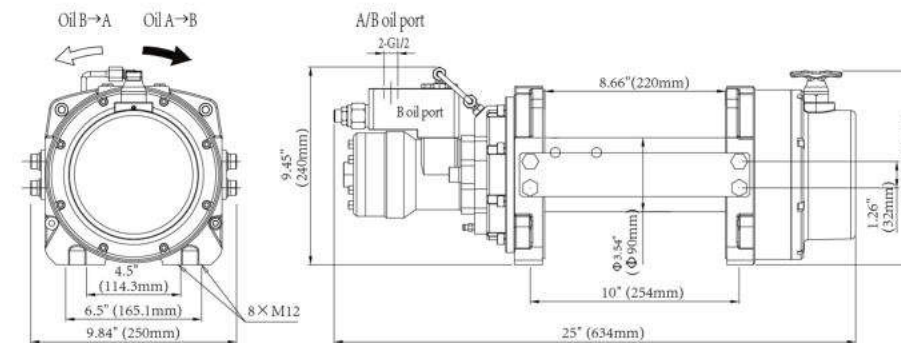
WARNING:

1. The winch will never be used for hoisting people or hoisting objects above people.
2. Do not use clutch under load.
3. Do not equip winch into oil supply system which without relief valve.

NOTE:

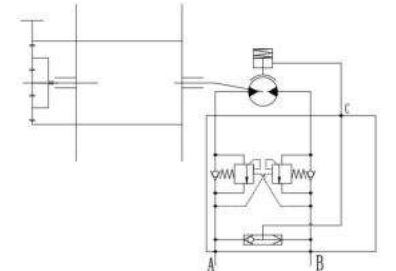
1. Recommended oil flow supply range is 35-60 l/min.
2. Dual balance valves as standard, winch must be used in Independent oil supply system which with relief valve.

HEN10000 - 8000



PNEUMATIC CLUTCH

Air pressure range (bar)	1~8
Ventilation volume (L/min)	1



SPECIFICATION

Model	First layer line pull		First layer line speed		Working pressure diff.		Oil flow supply	Gear ratio
	lbs	kg	fpm	mpm	psi	MPa		
HEN10000	10000	4540	19.7	6	1885	13	60	16.9:1
HEN8000	8000	3632	27.9	8.5	2030	14	60	16.9:1

Model	Wire rope dia.		Layer	Wire rope capacity	
	inch	mm		ft	m
HEN10000	Φ13/32"	Φ10.3	4	98.4'	30
HEN8000	Φ3/8"	Φ9.2	4	114.8'	35

PERFORMANCE

Model	Layer of cable	HEN10000		HEN10000		HEN10000	
		Rated line pull per layer		Line speed		Wire rope capacity per layer	
		lbs	kg	fpm	mpm	ft	m
	1	10000	4540	19.7	6	22'	6.7
	2	8296	3763	23.6	7.2	47.6'	14.5
	3	7088	3215	27.6	8.4	75.8'	23.1
	4	6188	2807	31.5	9.6	98.4'	30

Model	Layer of cable	HEN8000		HEN8000		HEN8000	
		Rated line pull per layer		Line speed		Wire rope capacity per layer	
		lbs	kg	fpm	mpm	ft	m
	1	8000	3632	27.9	8.5	24.3'	7.4
	2	6748	3061	33.1	10.1	52.2'	15.9
	3	5835	2647	38.4	11.7	83'	25.3
	4	5140	2332	43.3	13.2	114.8'	35

NET WEIGHT(WITHOUT WIRE ROPE)

Model	Weight	
	lbs	kg
HEN10000	110	50
HEN8000	108	49

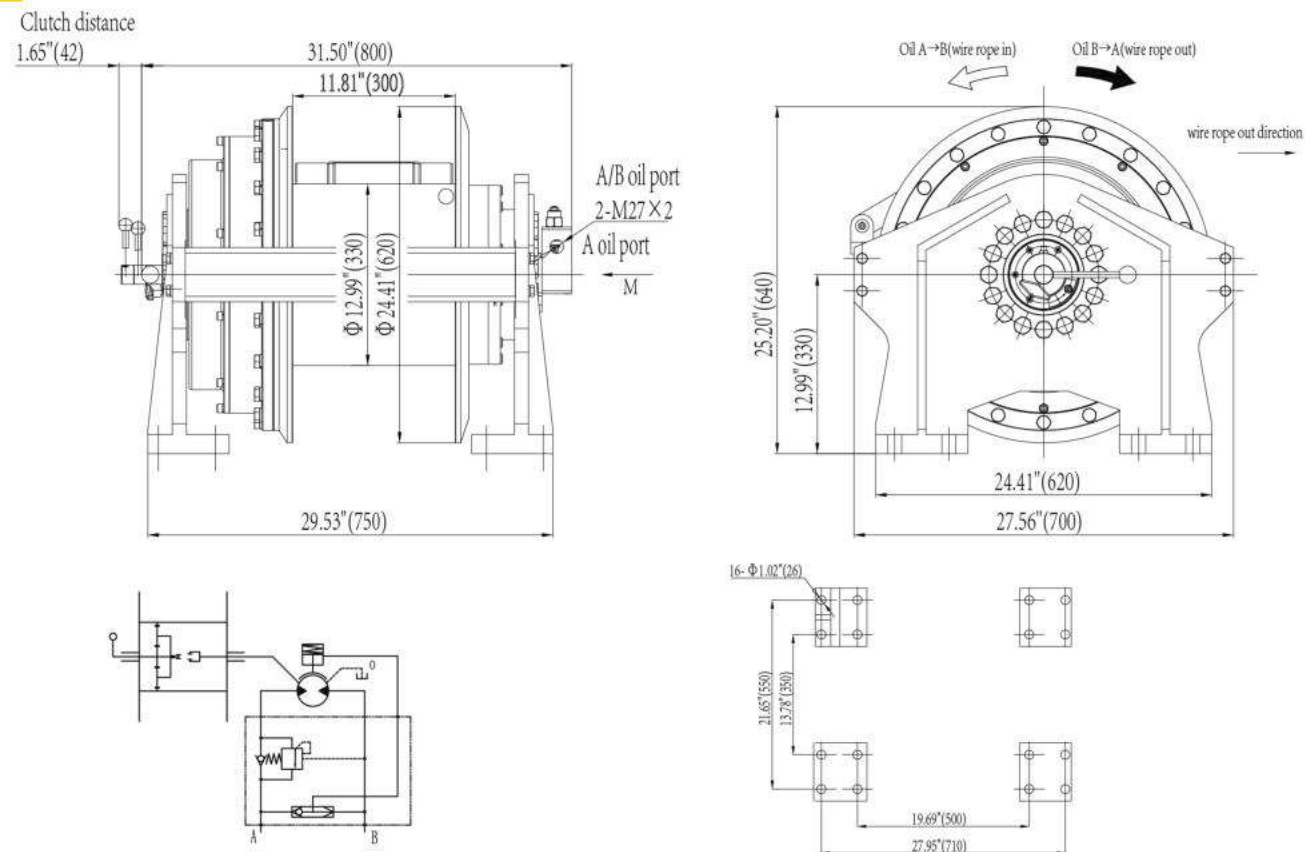
WARNING:

1. The winch will never be used for hoisting people or hoisting objects above people.
2. Do not use clutch under load.
3. Do not equip winch into oil supply system which without relief valve.

NOTE:

1. Recommended oil flow supply range is 35-60 l/min.
2. Dual balance valves as standard, winch must be used in Independent oil supply system which with relief valve.

HW-250/NH



SPECIFICATION		
First layer line pull (lbs/kg)	55000lbs/24944	
First layer line speed(fpm/mpm)	Normal speed 13.1/4	High speed 98.4/30
Working pressure diff. (psi/MPa)	2610/18	
Oil flow supply (l/min)	90	
Gear ratio	239:1	
Wire rope dia. (inch/mm)	Φ21/20"/Φ26	
Layer	4	
Wire rope capacity (ft/m)	180/55	
Valve model	NF-120 P1 S1-006	
Net weight(without wire rope) (lbs/kg)	1279/580	

PERFORMANCE						
Layer of cable	Rated line pull per layer		Line speed		Wire rope capacity per layer	
	lbs	kg	fpm	mpm	ft	m
1	55000	24944	13.1	4	32'	10
2	47987	21763	15.1	4.58	78'	24
3	42560	19302	17	5.17	127'	39
4	38239	17342	18.9	5.75	180'	55

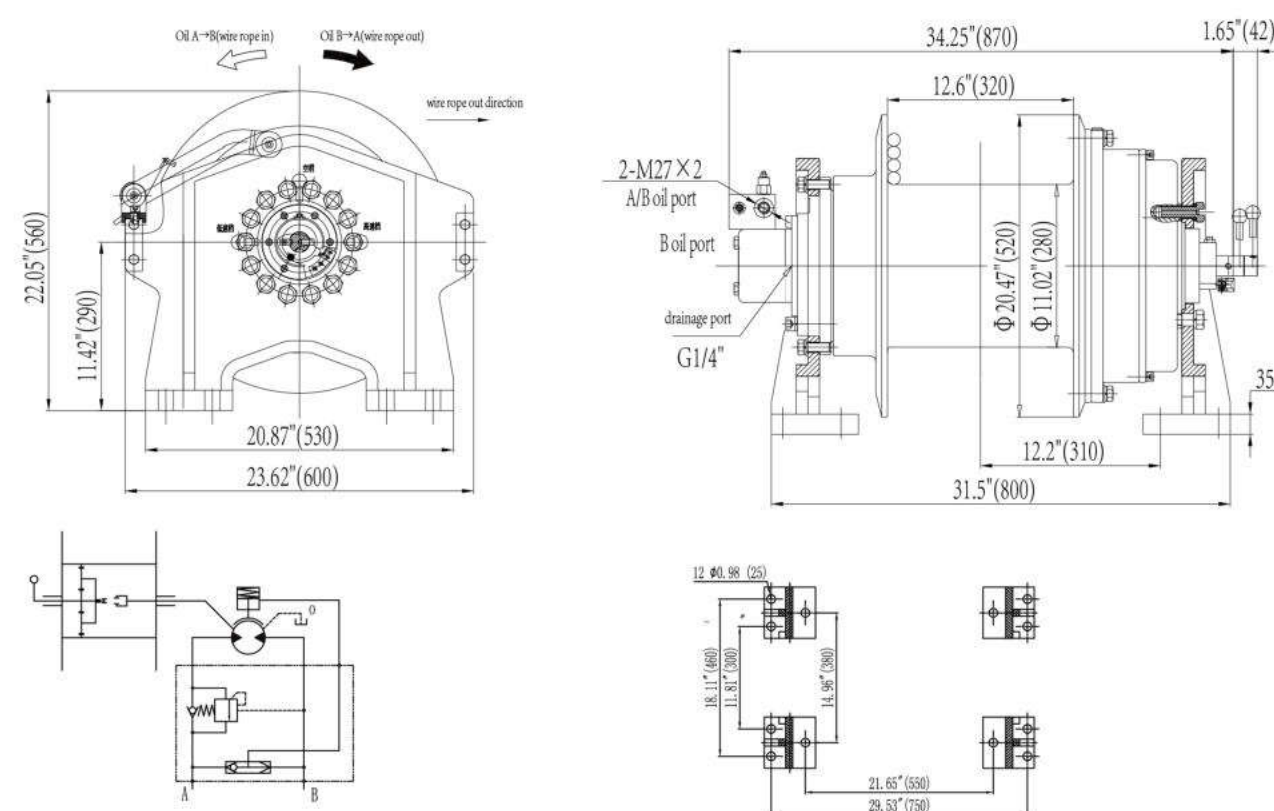
WARNING:

1. The winch will never be used for hoisting people or hoisting objects above people.
2. Do not use clutch under load.
3. Do not equip winch into oil supply system which without relief valve.
4. Do not exceed 500kg loads under high speed mode.

NOTE:

1. Recommended oil flow supply range is 50-90 l/min.
2. One balance valve as standard, winch must be used in Independent oil supply system which with relief valve.
3. Wire rope out direction please see above figure, DO NOT change direction without permission. Please ask when choosing winch type if need to change wire rope out direction.
4. Hydraulic motor drainage port must be directly connected to oil tank.
5. Winch has high speed, neutral and normal speed three gears.

HW-200/NH



SPECIFICATION		
First layer line pull (lbs/kg)	45000/20412	
First layer line speed(fpm/mpm)	Normal speed 11.5/3.5	High speed 49/15
Working pressure diff. (psi/MPa)	2465/17	
Oil flow supply (l/min)	70	
Gear ratio	84:1	
Wire rope dia. (inch/mm)	Φ7/8"/Φ22	
Layer	4	
Wire rope capacity (ft/m)	196/60	
Valve model	NF-120 P1 S1-003	
Net weight(without wire rope) (lbs/kg)	948/430	

PERFORMANCE						
Layer of cable	Rated line pull per layer		Line speed		Wire rope capacity per layer	
	llbs	kg	fpm	mpm	ft	m
1	45000	20412	11.5	3.5	39'	12
2	39277	17816	12.5	3.8	85'	26
3	34846	15806	14.1	4.3	137'	42
4	31313	14203	15.7	4.8	196'	60

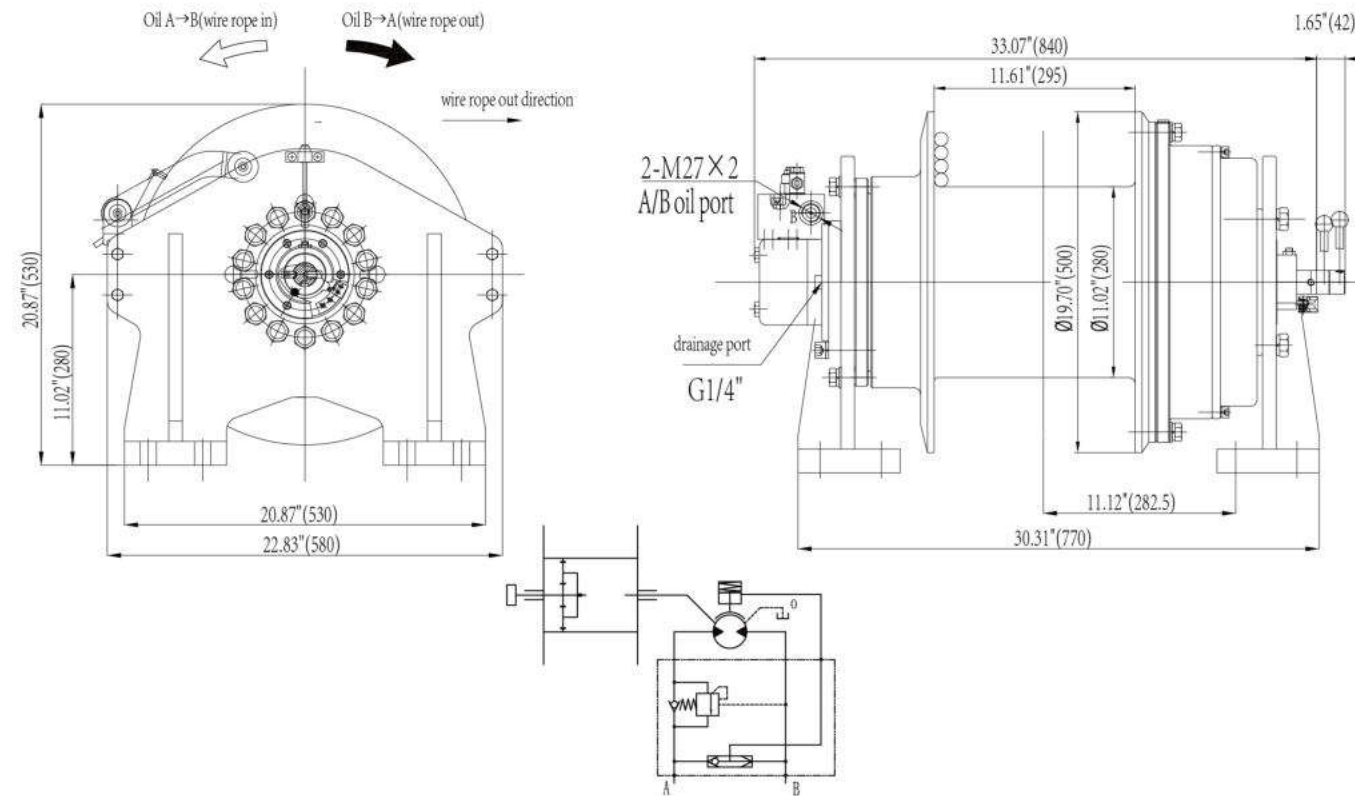
WARNING:

1. The winch will never be used for hoisting people or hoisting objects above people.
2. Do not use clutch under load.
3. Do not equip winch into oil supply system which without relief valve.
4. Do not exceed 500kg loads under high speed mode.

NOTE:

1. Recommended oil flow supply range is 30-90 l/min.
2. One balance valve as standard, winch must be used in Independent oil supply system which with relief valve.
3. Wire rope out direction please see above figure, DO NOT change direction without permission. Please ask when choosing winch type if need to change wire rope out direction.
4. Hydraulic motor drainage port must be directly connected to oil tank.
5. Relief valve can be selected from the valve block selection table as optional.
6. Winch has high speed, neutral and normal speed three gears.

HW-150/NH



SPECIFICATION		
First layer line pull (lbs/kg)	33000/14965	
First layer line speed(fpm/mpm)	Normal speed 13.1/4	High speed 49/15
Working pressure diff. (psi/MPa)	2320/16	
Oil flow supply (l/min)	70	
Gear ratio	84:1	
Wire rope dia. (inch/mm)	Φ3/4"/Φ20	
Layer	4	
Wire rope capacity (ft/m)	196/60	
Valve model	NF-120 P1 S1-003	
Net weight(without wire rope) (lbs/kg)	882/400	

PERFORMANCE						
Layer of cable	Rated line pull per layer		Line speed		Wire rope capacity per layer	
	lbs	kg	fpm	mpm	ft	m
1	33000	14965	13.1	4	36'	11
2	29117	13205	14.8	4.5	85'	26
3	26052	11815	16.5	5	137'	42
4	23571	10690	18.3	5.6	196'	60

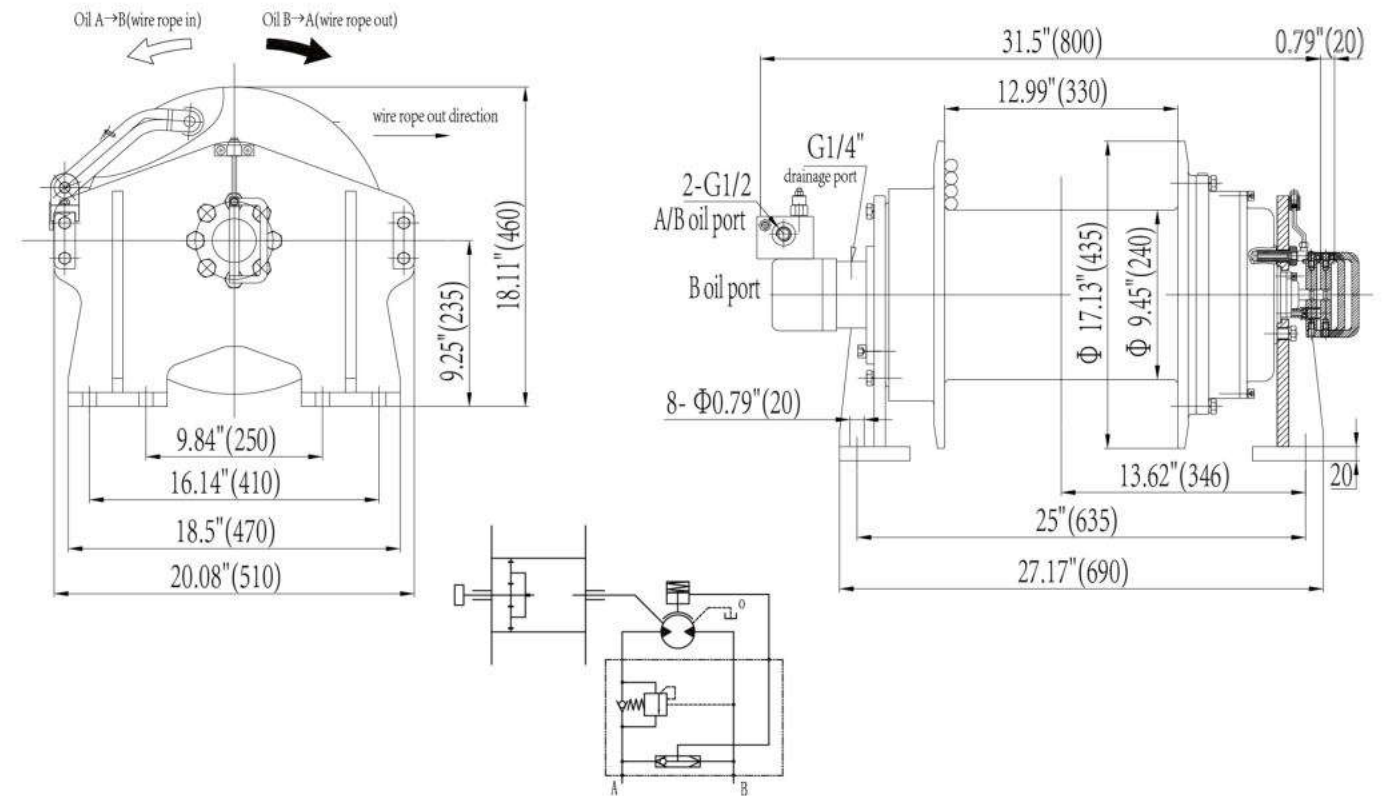
WARNING:

1. The winch will never be used for hoisting people or hoisting objects above people.
2. Do not use clutch under load.
3. Do not equip winch into oil supply system which without relief valve.

NOTE:

1. Recommended oil flow supply range is 25-70 l/min.
2. One balance valve as standard, winch must be used in Independent oil supply system which with relief valve.
3. Wire rope out direction please see above figure, DO NOT change direction without permission. Please ask when choosing winch type if need to change wire rope out direction.

HW-100/NH



SPECIFICATION		
First layer line pull (lbs/kg)	22000/9980	
First layer line speed(fpm/mpm)	18/5.5	
Working pressure diff. (psi/MPa)	2320/16	
Oil flow supply (l/min)	60	
Gear ratio	38.6:1	
Wire rope dia. (inch/mm)	Φ3/4"/Φ18	
Layer	4	
Wire rope capacity (ft/m)	213/65	
Valve model	NF-120 P1 S1-004	
Net weight(without wire rope) (lbs/kg)	617/280	

PERFORMANCE						
Layer of cable	Rated line pull per layer		Line speed		Wire rope capacity per layer	
	lbs	kg	fpm	mpm	ft	m
1	22000	9980	18	5.5	39'	12
2	19306	8757	20.6	6.2	92'	28
3	17200	7802	23.2	7	151'	46
4	15508	7034	25.9	7.8	213'	65

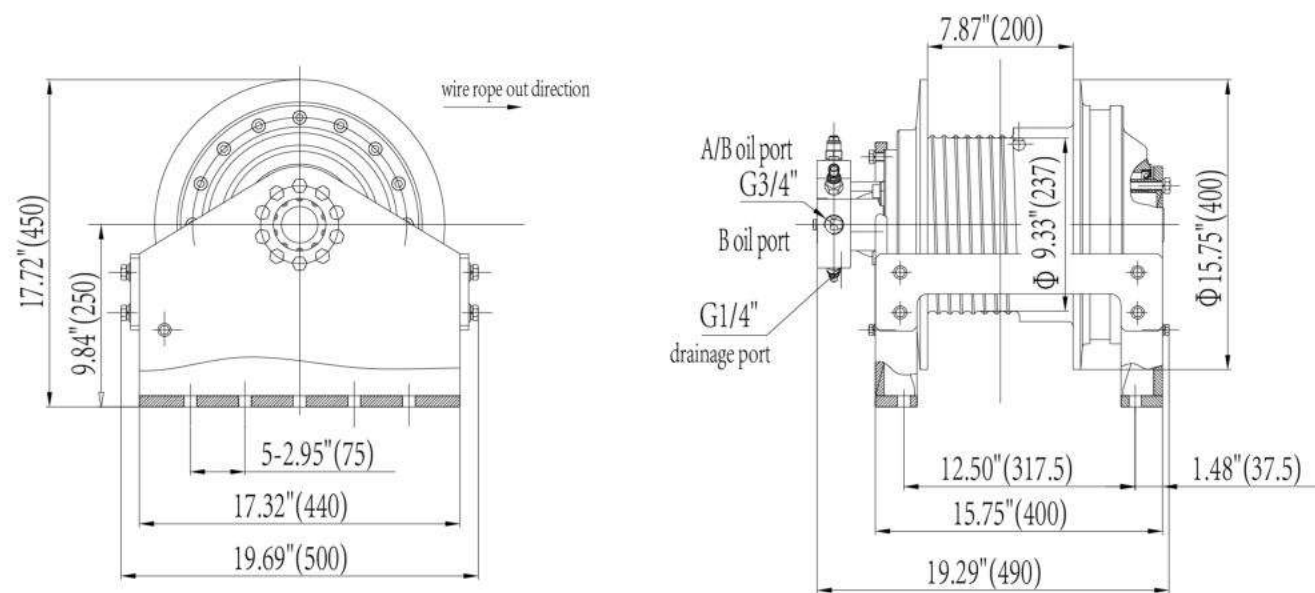
WARNING:

1. The winch will never be used for hoisting people or hoisting objects above people.
2. Do not use clutch under load.
3. Do not equip winch into oil supply system which without relief valve.

NOTE:

1. Recommended oil flow supply range is 25-70 l/min.
2. One balance valve as standard, winch must be used in Independent oil supply system which with relief valve.
3. Wire rope out direction please see above figure, DO NOT change direction without permission. Please ask when choosing winch type if need to change wire rope out direction.

HW-060/NH



SPECIFICATION	
First layer line pull (lbs/kg)	13500/6123
First layer line speed(fpm/mpm)	26.2/8.0
Working pressure diff. (psi/MPa)	2320/16
Oil flow supply (l/min)	60
Gear ratio	79.4:1
Wire rope dia. (inch/mm)	Φ3/5"/Φ14mm
Layer	5
Wire rope capacity (ft/m)	196'/60
Valve model	NF-120 P1Y2S1-006
Net weight(without wire rope) (lbs/kg)	440/200

PERFORMANCE						
Layer of cable	Rated line pull per layer		Line speed		Wire rope capacity per layer	
	lbs	kg	fpm	mpm	ft	m
1	13500	6123	26.2	8	19.7'	6.0
2	12152	5511	28.9	8.80	58.7'	17.9
3	11047	5010	31.8	9.70	100.7'	30.7
4	10125	4592	34.8	10.60	146.7'	44.7
5	9347	4239	37.7	11.50	196.9'	60.0

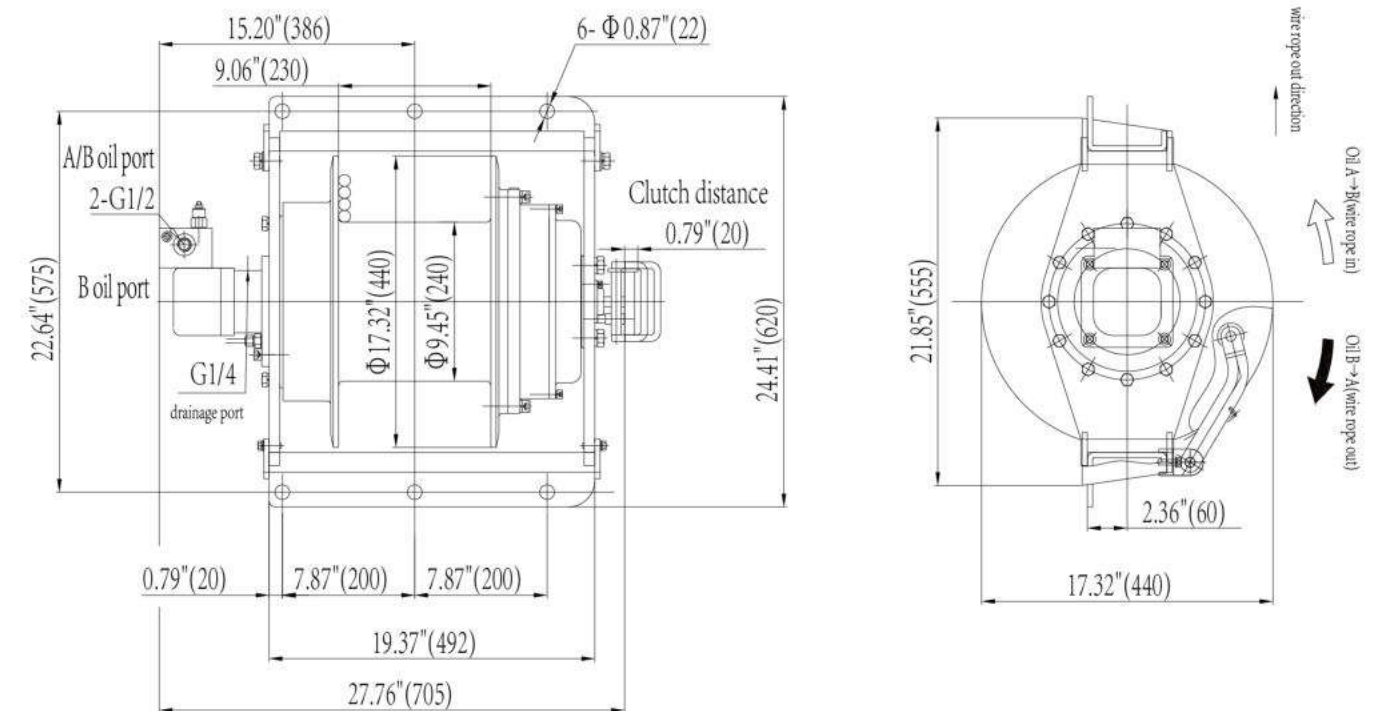
WARNING:

1. The winch will never be used for hoisting people or hoisting objects above people.
2. Do not use clutch under load.
3. Do not equip winch into oil supply system which without relief valve.

NOTE:

1. Recommended oil flow supply range is 25-70 l/min.
2. One balance valve as standard, winch must be used in Independent oil supply system which with relief valve.
3. Wire rope out direction please see above figure, DO NOT change direction without permission. Please ask when choosing winch type if need to change wire rope out direction.

HW-100H/NH



SPECIFICATION	
First layer line pull (lbs/kg)	22000/9980
First layer line speed(fpm/mpm)	22.9/7.0
Working pressure diff. (psi/MPa)	2320/16
Oil flow supply (l/min)	80
Gear ratio	38.6:1
Wire rope dia. (inch/mm)	Φ3/4"/Φ18
Layer	4
Wire rope capacity (ft/m)	147.6/45
Valve model	NF-120 P1 S1-004
Net weight(without wire rope) (lbs/kg)	617/280

PERFORMANCE						
Layer of cable	Rated line pull per layer		Line speed		Wire rope capacity per layer	
	lbs	kg	fpm	mpm	ft	m
1	22000	9980	22.9	7	31.2'	9.5
2	19100	8750	25.9	7.9	65.6'	20.0
3	16900	7800	29.1	8.9	105.0'	32.0
4	15200	7030	32.4	9.9	147.6'	45.0

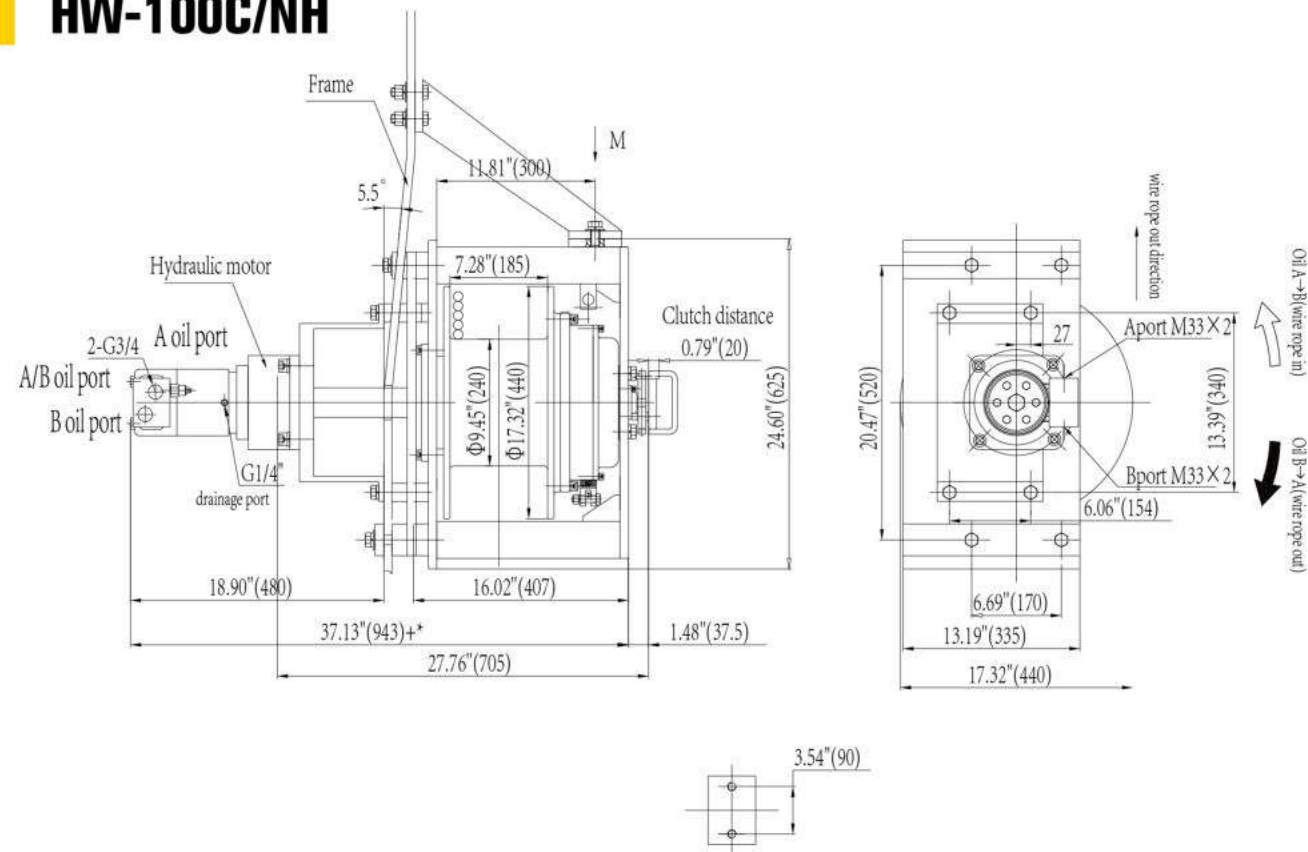
WARNING:

1. The winch will never be used for hoisting people or hoisting objects above people.
2. Do not use clutch under load.
3. Do not equip winch into oil supply system which without relief valve.

NOTE:

1. Recommended oil flow supply range is 25-80l/min.
2. One balance valve as standard, winch must be used in Independent oil supply system which with relief valve.
3. Wire rope out direction please see above figure, DO NOT change direction without permission. Please ask when choosing winch type if need to change wire rope out direction.

HW-100C/NH



SPECIFICATION		
First layer line pull (lbs/kg)	22000/9980	
First layer line speed(fpm/mpm)	22.9/7.0	
Working pressure diff. (psi/MPa)	2320/16	
Oil flow supply (l/min)	80	
Gear ratio	38.6:1	
Wire rope dia. (inch/mm)	Φ3/4"/Φ18	
Layer	5	
Wire rope capacity (ft/m)	147.6/45	
Valve model	NF-120 P1 S1-004	
Net weight(without wire rope) (lbs/kg)	771/350	

PERFORMANCE						
Layer of cable	Rated line pull per layer		Line speed		Wire rope capacity per layer	
	lbs	kg	fpm	mpm	ft	m
1	22000	9980	22.9	7	19'	6
2	19309	8757	25.9	7.9	49'	15
3	17201	7801	29.1	8.9	78'	24
4	15510	7034	32.4	9.9	114'	35
5	14123	6405	35.4	10.8	147.6'	45

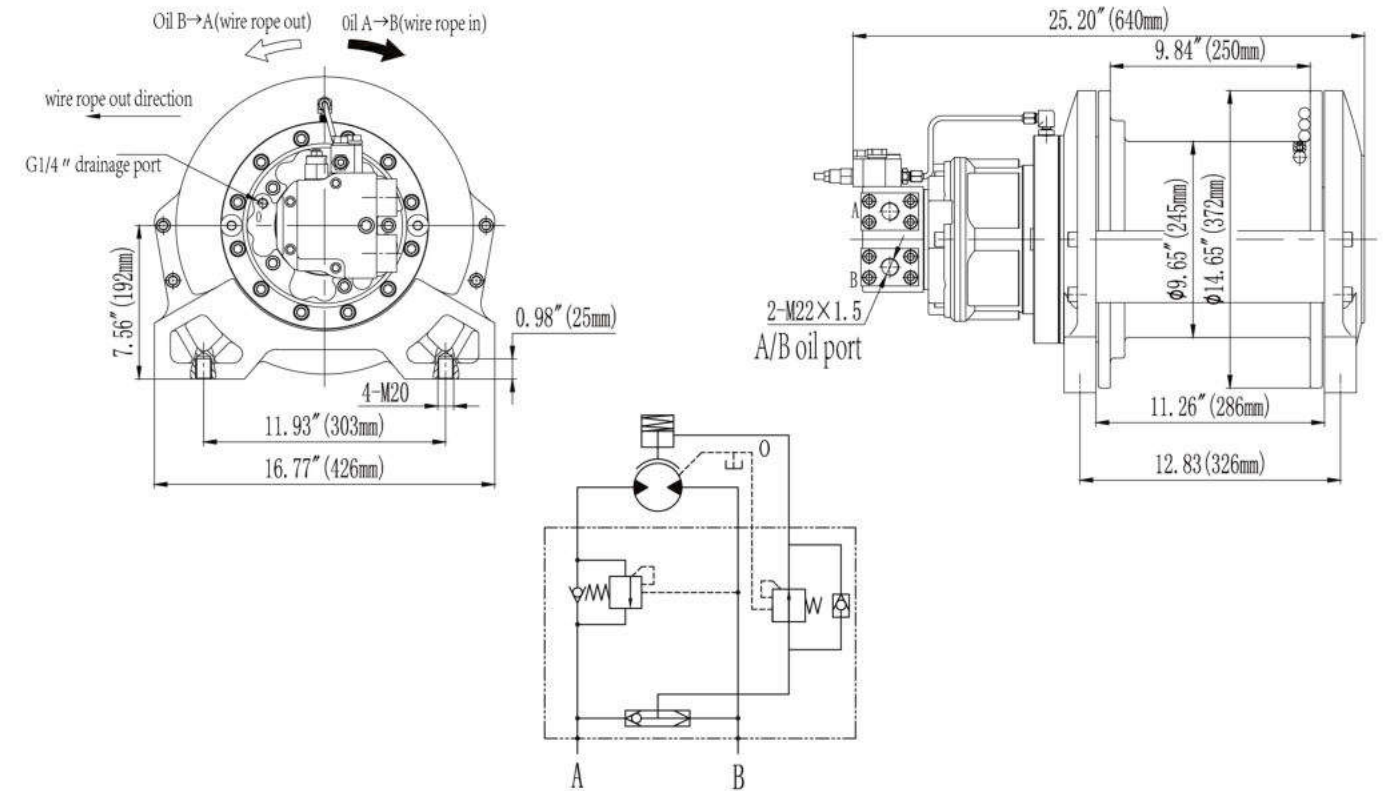
WARNING:

1. The winch will never be used for hoisting people or hoisting objects above people.
2. Do not use clutch under load.
3. Do not equip winch into oil supply system which without relief valve.

NOTE:

1. Recommended oil flow supply range is 25-80l/min.
2. One balance valve as standard, winch must be used in Independent oil supply system which with relief valve.
3. Wire rope out direction please see above figure, DO NOT change direction without permission. Please ask when choosing winch type if need to change wire rope out direction.

NCH30



SPECIFICATION		
First layer line pull (lbs/kg)	7200/3265	
First layer line speed(fpm/mpm)	49.2/15	
Working pressure diff. (psi/MPa)	2320/16	
Oil flow supply (l/min)	60	
Gear ratio	19.2:1	
Wire rope dia. (inch/mm)	Φ3/5"/Φ14	
Layer	3	
Wire rope capacity (ft/m)	137.8/42	
Valve model	NF-120 P1 J1 S1-005	
Net weight(without wire rope) (lbs/kg)	485/220	

PERFORMANCE						
Layer of cable	Rated line pull per layer		Line speed		Wire rope capacity per layer	
	lbs	kg	fpm	mpm	ft	m
1	7200	3265	49.2	15	36'	11
2	6498	2947	54.9	16.6	82'	25
3	5920	2685	60.7	18.2	137.8'	42

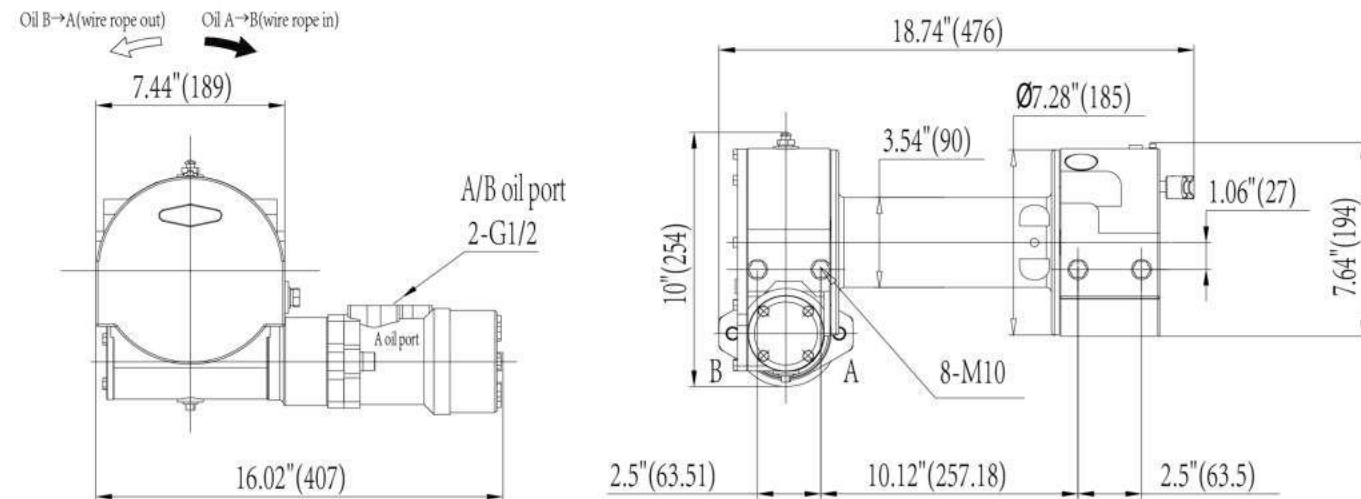
WARNING:

1. The winch will never be used for hoisting people or hoisting objects above people.
2. Do not equip winch into oil supply system which without relief valve.

NOTE:

1. Recommended oil flow supply range is 25-90 l/min.
2. One balance valve, one reducing valve as standard, winch must be used in Independent oil supply system which with relief valve.
3. Wire rope out direction please see above figure, DO NOT change direction without permission. Please ask when choosing winch type if need to change wire rope out direction.
4. Hydraulic motor drainage port must be directly connected to oil tank.

NSH12000



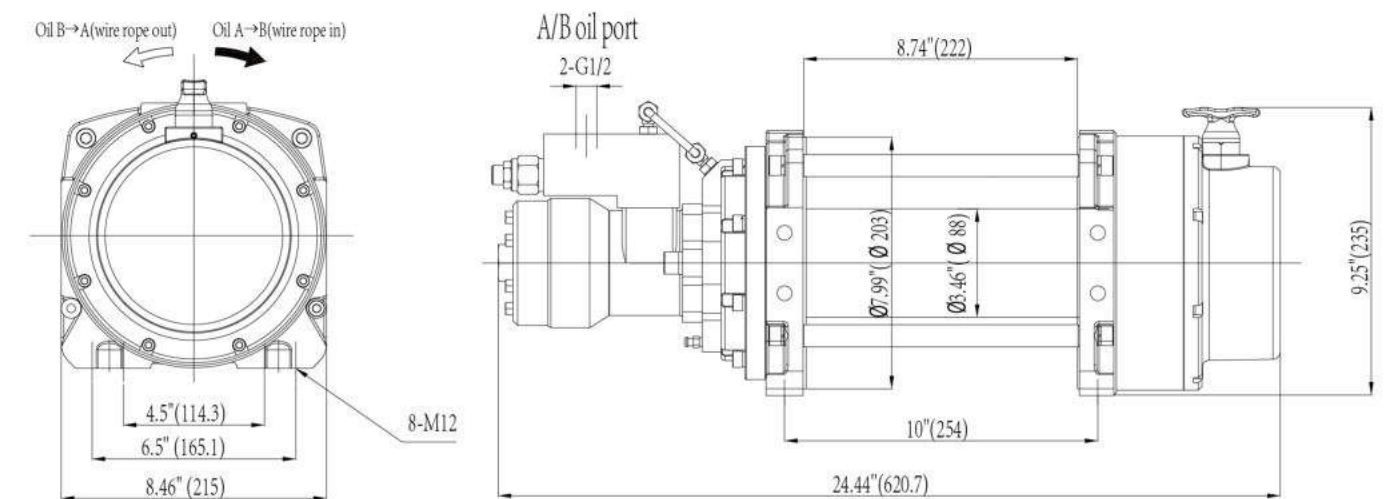
SPECIFICATION	
First layer line pull (lbs/kg)	12000/5448
First layer line speed(fpm/mpm)	6.5/2
Working pressure diff. (psi/MPa)	1740/12
Oil flow supply (l/min)	60
Gear ratio	60:1
Wire rope dia. (inch/mm)	Φ3/8"/Φ9.2
Layer	4
Wire rope capacity (ft/m)	95'/29
Valve model	N/A
Net weight(without wire rope) (lbs/kg)	135.6/61.5

PERFORMANCE						
Layer of cable	Rated line pull per layer		Line speed		Wire rope capacity per layer	
	lbs	kg	fpm	mpm	ft	m
1	12000	5448	6.5	2	20'	6
2	10122	4591	7.2	2.2	40'	12
3	8753	3970	7.8	2.4	70'	21
4	7710	3497	8.5	2.6	95'	29

VALVE OPTIONS	
Valve	NF-90 P2 S1-002
	NF-90 P2 Y1 S1-002
	NF-90 P2 Y2 S1-002

- WARNING:**
 - The winch will never be used for hoisting people or hoisting objects above people.
 - Do not use clutch under load.
 - Do not equip winch into oil supply system which without relief valve.
- NOTE:**
 - Recommended oil flow supply range is 30-60 l/min.
 - Winch must be used in Independent oil supply system which with relief valve.

NVH15000



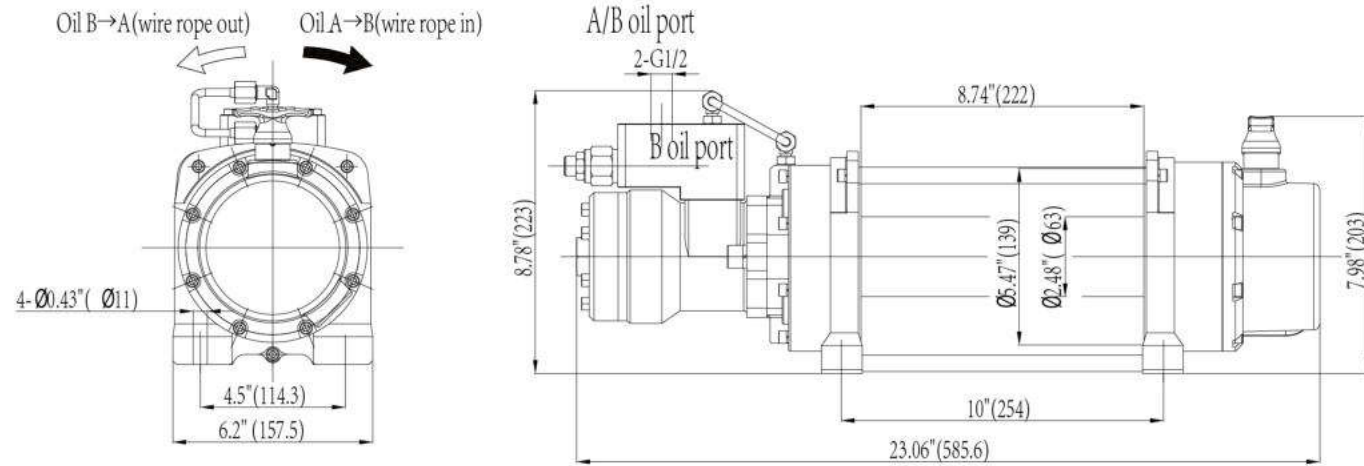
SPECIFICATION	
First layer line pull (lbs/kg)	15000/6810
First layer line speed(fpm/mpm)	18/5.5
Working pressure diff. (psi/MPa)	2320/16
Oil flow supply (l/min)	60
Gear ratio	17.3:1
Wire rope dia. (inch/mm)	Φ29/64"/Φ11.5'
Layer	4
Wire rope capacity (ft/m)	92'/28
Valve model	N/A
Net weight(without wire rope) (lbs/kg)	169/77

PERFORMANCE						
Layer of cable	Rated line pull per layer		Line speed		Wire rope capacity per layer	
	lbs	kg	fpm	mpm	ft	m
1	15000	6810	18	5.5	19.4'	5.9
2	12000	5443	22.3	6.8	43.3'	13.2
3	10000	4536	26.2	8	76.9'	21.9
4	8000	3632	30.5	9.3	92'	28

VALVE OPTIONS	
Valve	NF-60 P2 Y1 S1-001
	NF-60 P2 Y2 S1-001

- WARNING:**
 - The winch will never be used for hoisting people or hoisting objects above people.
 - Do not use clutch under load.
 - Do not equip winch into oil supply system which without relief valve.
- NOTE:**
 - Recommended oil flow supply range is 30-60 l/min.
 - Dual balance valves as standard, winch must be used in Independent oil supply system which with relief valve.

NVH10000



SPECIFICATION

First layer line pull (lbs/kg)	10000/4540
First layer line speed(fpm/mpm)	14.8/4.5
Working pressure diff. (psi/MPa)	1522/10.5
Oil flow supply (l/min)	60
Gear ratio	31.3:1
Wire rope dia. (inch/mm)	Φ3/8"/Φ9.2'
Layer	4
Wire rope capacity (ft/m)	85.3/26
Valve model	NF-60 P1 S1-001
Net weight(without wire rope) (lbs/kg)	141/64

PERFORMANCE

Layer of cable	Rated line pull per layer		Line speed		Wire rope capacity per layer	
	lbs	kg	fpm	mpm	ft	m
1	10000	4540	14.8	4.5	18'	5.5
2	7969	3614	18.4	5.6	40'	12.2
3	6624	3004	22.3	6.8	65'	19.8
4	5667	2570	25.9	7.9	85.3'	26

VALVE OPTIONS

Valve	NF-60 P2 Y1 S1-001
	NF-60 P2 Y2 S1-001

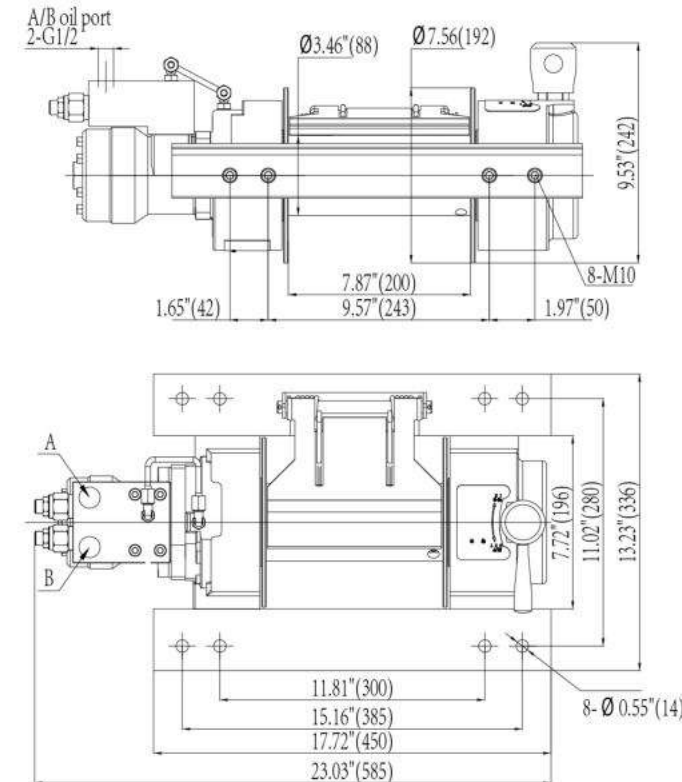
WARNING:

- The winch will never be used for hoisting people or hoisting objects above people.
- Do not use clutch under load.
- Do not equip winch into oil supply system which without relief valve.

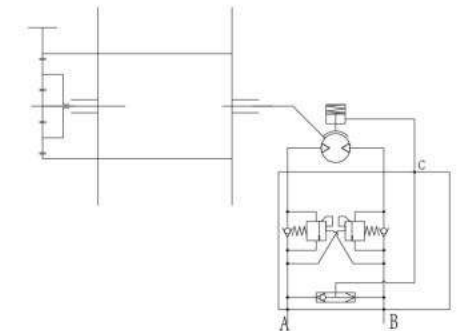
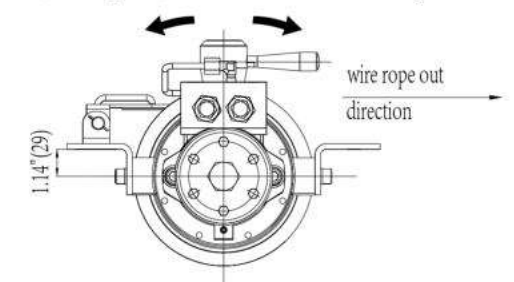
NOTE:

- Recommended oil flow supply range is 30-60 l/min.
- Dual balance valves as standard, winch must be used in Independent oil supply system which with relief valve.

HW-040/NH



Oil A→B(wire rope in) Oil B→A(wire rope out)



SPECIFICATION

First layer line pull (lbs/kg)	8800/3991
First layer line speed(fpm/mpm)	29.5/9
Working pressure diff. (psi/MPa)	1885/13
Oil flow supply (l/min)	60
Gear ratio	23:1
Wire rope dia. (inch/mm)	Φ13/32"/Φ10.3
Layer	3
Wire rope capacity (ft/m)	69/21
Valve model	N/A
Net weight(without wire rope) (lbs/kg)	110/50

PERFORMANCE

Layer of cable	Rated line pull per layer		Line speed		Wire rope capacity per layer	
	lbs	kg	fpm	mpm	ft	m
1	8800	3991	29.5	9	18.37'	5.6
2	7291	3307	33.8	10.3	40.35'	12.3
3	6215	2819	39.7	12.1	69'	21

WARNING:

- The winch will never be used for hoisting people or hoisting objects above people.
- Do not use clutch under load.
- Do not equip winch into oil supply system which without relief valve.

NOTE:

- Recommended oil flow supply range is 25-70 l/min.
- Dual balance valves as standard, winch must be used in Independent oil supply system which with relief valve.



WELCOME TO JOIN INTO NOVAWINCH FLEET

We know what is the best design for winching application, we know how to build a winch, we also know the correct maintenance method for increase the service life of winches, we are winch mavin.

Year after year, NOVAWINCH brand and culture penetrate into worldwide area, with distributor increase rapidly, we brings safety and stability into more than 30 countries already.

We invite you to become NOVAWINCH distributor/agent, and share the joy of franchise business and wealth for a better future.



Nowvow mechanical & electrical Corp., Ltd (Novawinch brand owner) offers a limited lifetime warranty on the mechanical components to authorised distributor & dealer of the winch subject to the following:

Novawinch Limited Lifetime Warranty:

The winch is used for permitted application use only.(expect design for it)

The limited lifetime warranty covers the purchaser of the winch against manufacturing defects in workmanship and materials on all mechanical components.

Mechanical components and associated parts have a lifetime warranty.

Hydraulic motors, valves and associated parts have a limited two (2) year warranty.

The warranty does not apply to the finish of the winch or components.

The owner will be responsible for removing the winch and returning it to an approved Novawinch authorised distributor or dealer within the warranty period.

All freight or delivery charges from the authorised distributor or dealer must be paid for by the owner of the winch unless specified by an authorised distributor or dealer.

Novawinch will not be liable for any fees, costs or charges associated from the removal or installation of the winch, whether or not the winch is under warranty.

Novawinch will repair or replace any or all of the faulty winch components, after an inspection by an authorised distributor or dealer has determined that some or all parts of the winch are defective hence are deemed to be replaced or fixed under warranty.

Novawinch Warranty Exclusions:

There are certain conditions that make the winch not eligible for warranty claims. The warranty is void if, but not limited to the following:

The winch is used inappropriate applications.

The Steel cable and Synthetic Winch rope are excluded from this warranty, unless specified otherwise by Novawinch, at the discretion of Novawinch.

The winch is damaged in any way from corrosion or water ingress.

The winch is returned in pieces.

The winch has been modified or disassembled resulting in failure.

Any winch component shows signs of normal wear and tear, damage from an accident, abuse, misuse, collision, overloading, modification, misapplication, improper installation or improper service or maintenance.

The winch was not purchased through the Novawinch Authorised Dealer Network.

**The warranty set forth above is the only warranty. Novawinch reserves the right to change the product design at any time without notice. Where this has happened, Novawinch shall have no obligation to upgrade or otherwise modify any previously manufactured products.*